

2023/24



FIS ALPIN



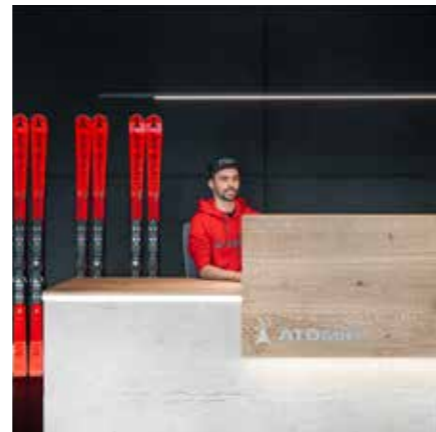
ENGLISH





PRO CENTER

THE ULTIMATE SHOP FOR RACERS



ATOMIC PRO CENTERS

Atomic Pro Centers are our competence centers created exclusively for FIS members and race enthusiasts, from junior racers to World Cup competitors. You'll quickly discover it's not just the gear that makes these places special. Our experienced alpine race technicians will work with you to find the perfect ski set-up.

Our main Atomic Pro Center is located at the Atomic global headquarters in Altenmarkt, on the same site as our ski production and R&D facilities. There is also an Atomic Pro Center at SNØ in Oslo, at Equipion in Moscov and 30 Atomic Pro Center Partners worldwide.

RACING SERVICES

Experts with World Cup experience will share our top-end racing equipment with you and build your own individual set-up. It enables racers on the way up to experience the unique service enjoyed by our top Atomic stars – from having their skis tuned in our Race Department with Wintersteiger equipment to having their boots professional fitted by our Atomic race technicians.



APPOINTMENT

Racing services are available in Altenmarkt and Oslo, and any of our Pro Center partners in your region. To make sure we have enough time for individual service, please book an appointment in advance.

Please find our Atomic Pro Center and Pro Center Partners listed on the back page of the catalog.

10 YEARS IN RED: HAPPY BIRTHDAY, REDSTER!

Mikaela Shiffrin celebrated her first World Cup victory with it, smashed countless records, and still goes for it. Not only for her it is literally the base for success. 196 World Cup victories, close to 500 podium finishes, 40 crystal globes, 37 medals at World Championships, and 16 Olympic medals are listed on its success records. Guess you know what we're talking about here – of course, the Redster. What started with a freely invented name now spans over an entire product range. Together with athletes and developers, we look back on a thriving decade in red.

Before 2012, "race" was an umbrella term used by every manufacturer in the ski industry. However, the think tank from Altenmarkt wanted more. Its own term, its own trademark for these products.

Based on the Porsche Speedster, and mixed with Atomic's Red brand color, the name "Redster" was born. The first product line under this

new name was equipped with the existing double deck technology. It did not take too long until the first successes on the race course were reached: Kathrin Zettel, Mikaela Shiffrin, and Co. raced to 13 victories in the first World Cup season on the new ski, two gold medals at the 2013 World Championships in Schladming, not far from the Atomic factory, completed the first season in red.

BORN ON THE RACE COURSE.

Given the success of those years and the constant pursuit for more, it's also no surprise that the development of the Redster didn't stop at the ski. Not only did a completely new generation of Redster skis follow in 2017/18 with the Servotec technology, but also the extension of the meanwhile well-established brand name to a complete product line in red, from bags and helmets to products on the Nordic sector – a true milestone in the Redster history.

After that, the products underwent small adjustments and further development, however, the name "Redster" remained like a "red thread", even when the Redster

skis made the next big step and the Revoshock technology was developed.

No less than 34 people have been involved in the development of what is currently the latest technology on the market, from prototype developers to designers and World Cup athletes. The former worked with almost 50 prototypes before the Redster Revoshock came to the market in 2021.

Tests in the laboratory and with the internal test team have played their part in making the Redster Revoshock what used to be known as "race": a ski that enables faster and more controlled skiing – made

for world-class ski racers and ambitious amateur skiers in search of the ultimate on the slopes.

Unlike ski races, there is no finish line in ski development. Faster – higher – further is the motto – or to stay with the properties of a piste ski: faster – more dynamic – more stable.

The driving force behind the development of the Redster undoubtedly is and has always been the racing department. World Cup stars such as Mikaela Shiffrin, Aleksander Aamodt Kilde, Sofia Goggia,

Manuel Feller, Lucas Braathen, and Marco Schwarz have all had a major influence on the technology of the current model, the Redster Revoshock. Our top athletes provided valuable inputs in the prototype phase to validate the products between the gates in a race against the stopwatch.

Properties such as stability, power, easy turn initiation, and control are the Redster team's requirements for the perfect ski. Anyone who has had the Redster Revoshock under their ski boots knows how it will react. Or to say it in the words of world champion Marco

Schwarz, "It makes it easier to concentrate on racing as such! If you make a mistake, you're back on track quicker. It makes skiing on rough slopes even smoother."

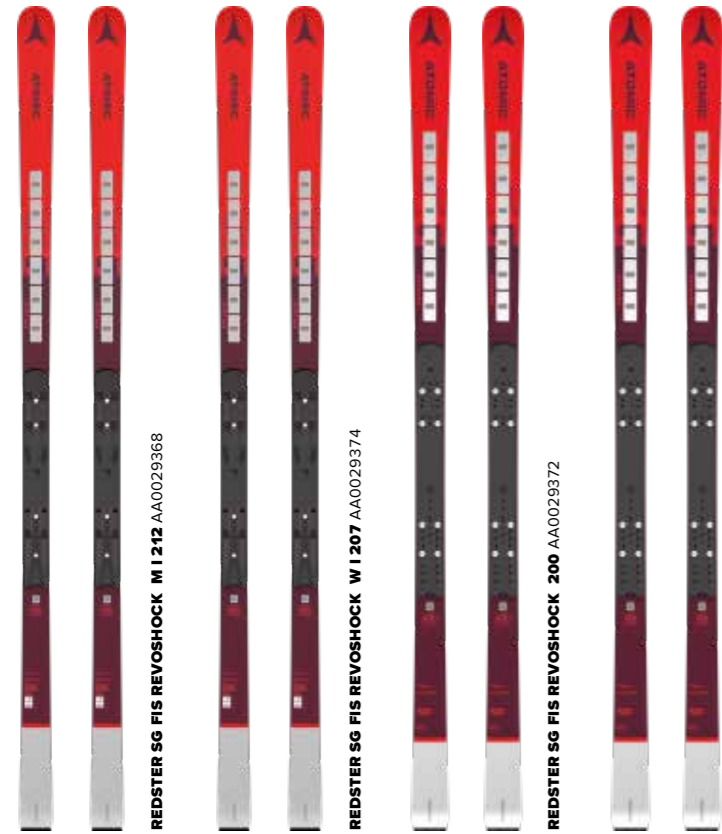
To this day, the ski is the heart of the product family. Together with ski boots, poles, goggles, helmets, and apparel, the Redster products provide the "Perfect Setup" for every skier which is unique in the ski industry – with World Cup-tested technologies that have proven themselves on the world's slopes for ten years.

Happy Birthday, Redster!



SKIS TECHNICAL SPECIFICATIONS

SG



G9



S9



PRODUCT	ART. NO.	BINDINGS	LENGTH (cm)	RADIUS (m)	SIDE CUT TIP (mm)	SIDE CUT WAIST (mm)	SIDE CUT TAIL (mm)	FEATURES	PRICES
REDSTER SG FIS REVOSHOCK M I 212	AA0029368	-	212	45	95	65	81	Revoshock, Ultra Power Woodcore, Ultra TI Powered, Full Sidewall, Structured Topsheet, Side Edge Angle: 87°, Base Edge Angle: 1.0°, World Cup Base Finish, Icon Interface	
REDSTER SG FIS REVOSHOCK W I 207	AA0029374	-	207	40	95	65	81.2	Revoshock, Ultra Power Woodcore, Ultra TI Powered, Full Sidewall, Structured Topsheet, Side Edge Angle: 87°, Base Edge Angle: 1.0°, World Cup Base Finish, Icon Interface	
REDSTER SG FIS REVOSHOCK 200	AA0029372	-	200	35	96.5	65	81.1	Revoshock, Ultra Power Woodcore, Ultra TI Powered, Full Sidewall, Structured Topsheet, Side Edge Angle: 87°, Base Edge Angle: 1.0°, World Cup Base Finish, Active Race Interface	
REDSTER SG FIS REVOSHOCK	AA0028768	-	185 192	30 35	98.5 98	65	82 82.4	Revoshock, Ultra Power Woodcore, Ultra TI Powered, Full Sidewall, Structured Topsheet, Side Edge Angle: 87°, Base Edge Angle: 1.0°, World Cup Base Finish, Active Race Interface	
REDSTER G9 FIS REVOSHOCK M I 193	AA0029872	-	193	30	101.5	65	83.8	Revoshock, Ultra Power Woodcore, Ultra TI Powered, Full Sidewall, Structured Topsheet, Side Edge Angle: 87°, Base Edge Angle: 0.5°, World Cup Base Finish, Icon Interface	
REDSTER G9 FIS REVOSHOCK M I 193	AA0030032	-	193	30	101.5	65	83.8	Revoshock, Ultra Power Woodcore, Ultra TI Powered, Full Sidewall, Structured Topsheet, Side Edge Angle: 87°, Base Edge Angle: 0.8°, World Cup Base Finish, Active Race Interface	
REDSTER G9 FIS REVOSHOCK W I 188	AA0029876	-	188	30	97.6	65	83.5	Revoshock, Ultra Power Woodcore, Ultra TI Powered, Full Sidewall, Structured Topsheet, Side Edge Angle: 87°, Base Edge Angle: 0.5°, World Cup Base Finish, Icon Interface	

PRODUCT	ART. NO.	BINDINGS	LENGTH (cm)	RADIUS (m)	SIDE CUT TIP (mm)	SIDE CUT WAIST (mm)	SIDE CUT TAIL (mm)	FEATURES	PRICES
REDSTER G9 FIS REVOSHOCK W 188	AA0029878	-	188	30	97.6	65	83.5	Revoshock, Ultra Power Woodcore, Ultra TI Powered, Full Sidewall, Structured Topsheet, Side Edge Angle: 87°, Base Edge Angle: 0.8°, World Cup Base Finish, Active Race Interface	
REDSTER G9 FIS REVOSHOCK W 183	AA0029850	-	183	30	100	65	80.5	Revoshock, Ultra Power Woodcore, Ultra TI Powered, Full Sidewall, Structured Topsheet, Side Edge Angle: 87°, Base Edge Angle: 0.8°, World Cup Base Finish, Active Race Interface	
REDSTER G9 RS REVOSHOCK I 190	AA0029764	-	190	27.5	104	68	89	Revoshock, Ultra Power Woodcore, Ultra TI Powered, Full Sidewall, Structured Topsheet, Side Edge Angle: 87°, Base Edge Angle: 0.8°, World Cup Base Finish, Icon Interface	
REDSTER G9 RS REVOSHOCK 183	AA0029768	-	183	24	105	67.5	89	Revoshock, Ultra Power Woodcore, Ultra TI Powered, Full Sidewall, Structured Topsheet, Side Edge Angle: 87°, Base Edge Angle: 0.8°, World Cup Base Finish, Active Race Interface	
REDSTER G9 RS REVOSHOCK 176	AA0029770	-	176	21	106.5	67	90	Revoshock, Ultra Power Woodcore, Ultra TI Powered, Full Sidewall, Structured Topsheet, Side Edge Angle: 87°, Base Edge Angle: 0.8°, World Cup Base Finish, Active Race Interface	
REDSTER S9 FIS M I 165	AA0029772	-	165	12.5	115.9	65.3	101.3	Ultra Power Woodcore, Ultra TI Powered, Full Sidewall, Structured Topsheet, Side Edge Angle: 87°, Base Edge Angle: 0.5°, World Cup Base Finish, Icon Interface	
REDSTER S9 FIS M 165	AA0029774	-	165	12.5	115.9	65.3	101.3	Ultra Power Woodcore, Ultra TI Powered, Full Sidewall, Structured Topsheet, Side Edge Angle: 87°, Base Edge Angle: 0.5°, World Cup Base Finish, Active Race Interface	

SKIS TECHNICAL SPECIFICATIONS

SL

JR GS

JR SL

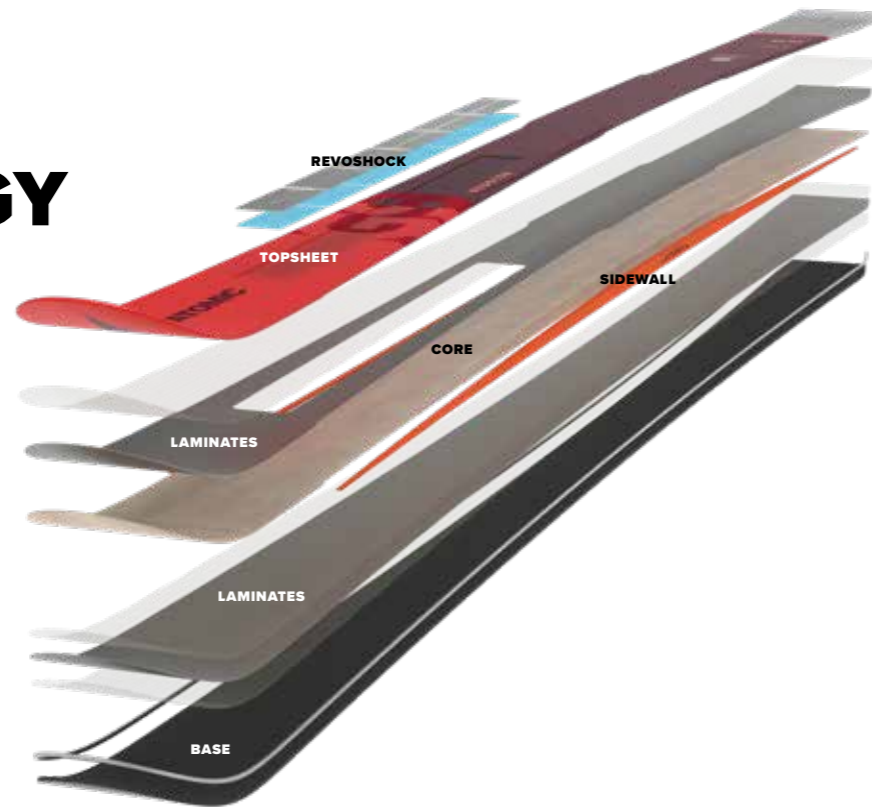
JR ALLROUND



PRODUCT	ART. NO.	BINDINGS	LENGTH (cm)	RADIUS (m)	SIDE CUT TIP (mm)	SIDE CUT WAIST (mm)	SIDE CUT TAIL (mm)	FEATURES	PRICES
REDSTER S9 FIS W I 157	AA0029776	-	157	12.7	114.5	66.3	99.5	Ultra Power Woodcore, Ultra TI Powered, Full Sidewall, Structured Topsheet, Side Edge Angle: 87°, Base Edge Angle: 0.5°, World Cup Base Finish, Icon Interface	
REDSTER S9 FIS W 157	AA0029778	-	157	12.7	114.5	66.3	99.5	Ultra Power Woodcore, Ultra TI Powered, Full Sidewall, Structured Topsheet, Side Edge Angle: 87°, Base Edge Angle: 0.5°, World Cup Base Finish, Active Race Interface	
REDSTER S9 FIS 155	AA0029780	-	155	12.1	112.9	65	97.5	Ultra Power Woodcore, Ultra TI Powered, Full Sidewall, Structured Topsheet, Side Edge Angle: 87°, Base Edge Angle: 0.5°, World Cup Base Finish, Active Race Interface	
REDSTER S9 FIS	AA0029792	-	152	11.6	115.5	65	96.5	Ultra Power Woodcore, Ultra TI Powered, Dura Cap Sidewall, Structured Topsheet, Side Edge Angle: 87°, Base Edge Angle: 0.8°, World Cup Base Finish, Active Race Interface	
REDSTER G9 FIS REVOSHOCK S	AA0029782	-	187	26	103	65	82.4	Revoshock, S Ultra Power Woodcore, Ultra TI Powered, Full Sidewall, Structured Topsheet, Side Edge Angle: 87°, Base Edge Angle: 0.8°, World Cup Base Finish, Active Race Interface	
REDSTER G9 FIS REVOSHOCK S	AA0029784	-	173 180	20 24	105 104	65 65	87.5 85.5	Revoshock, S Ultra Power Woodcore, Ultra TI Powered, Full Sidewall, Structured Topsheet, Side Edge Angle: 87°, Base Edge Angle: 0.8°, World Cup Base Finish, Active Race Interface	

PRODUCT	ART. NO.	BINDINGS	LENGTH (cm)	RADIUS (m)	SIDE CUT TIP (mm)	SIDE CUT WAIST (mm)	SIDE CUT TAIL (mm)	FEATURES	PRICES
REDSTER G9 FIS REVOSHOCK S	AA0029786	-	159 166	17.3 18.1	104.5 106	65 65	86.5 88	Revoshock, S Power Woodcore, Ultra TI Powered, Dura Cap Sidewall, Structured Topsheet, Side Edge Angle: 87°, Base Edge Angle: 0.8°, World Cup Base Finish, Active Race Interface	
REDSTER G9 FIS REVOSHOCK S J-RP²	AA0029788 AAST01958 AAST01960 AAST01962 AAST01994	- COLT 12 COLT 10 COLT 7 C COLT 7	152 159 166	17 17.3 18.1	102.5 104.5 106	65 65 65	84.5 86.5 88	Revoshock, Power Woodcore, Ultra TI Powered, Dura Cap Sidewall, Structured Topsheet, Side Edge Angle: 87°, Base Edge Angle: 0.8°, World Cup Base Finish, Junior Race Interface	
REDSTER G9 FIS J-RP²	AA0029790 AAST01964 AAST01966 AAST01996	- COLT 10 COLT 7 C COLT 7	124 131 138 145	13.5 14 14.5 15	96 98 100 102	65 65 65 65	79 81 83 85	Power Woodcore, Ultra TI Powered, Dura Cap Sidewall, Structured Topsheet, Side Edge Angle: 87°, Base Edge Angle: 0.8°, World Cup Base Finish, Junior Race Interface	
REDSTER S9 FIS J-RP²	AA0029794 AAST01968 AAST01970	- COLT 12 COLT 10	145 152	11 11.6	112.5 115.5	65 65	94 96.5	Ultra Power Woodcore, Ultra TI Powered, Dura Cap Sidewall, Structured Topsheet, Side Edge Angle: 87°, Base Edge Angle: 0.8°, World Cup Base Finish, Junior Race Interface	
REDSTER S9 FIS J-RP²	AA0029796 AAST01972 AAST01974 AAST01998	- COLT 10 COLT 7 C COLT 7	124 131 138	8.9 9.7 10.4	105.5 107 108.5	65 65 65	88 89.5 91	Power Woodcore, Ultra TI Powered, Dura Cap Sidewall, Structured Topsheet, Side Edge Angle: 87°, Base Edge Angle: 0.8°, World Cup Base Finish, Junior Race Interface	
REDSTER J9 FIS J-RP²	AA0029798 AAST01976 AAST01992	- COLT 7 C COLT 7	116	9	104	64	84.5	Light Woodcore, Densolite Core, Dura Cap Sidewall, Glossy Topsheet, Side Edge Angle: 87°, Base Edge Angle: 1.0°, World Cup Base Finish, Junior Race Interface	
REDSTER J9 RS J-RP²	AA0029800 AAST01978 AAST01980 AAST01990	- COLT 10 COLT 7 C COLT 7	120 130 140 150 160	9.3 11 12.5 14 16	102 103 104 105 106	65 65 65 65 65	86.5 87.5 88.5 89.5 90.5	Light Woodcore, Densolite Core, Dura Cap Sidewall, Glossy Topsheet, Side Edge Angle: 87°, Base Edge Angle: 1.0°, Junior Race Interface	

REDSTER TECHNOLOGY

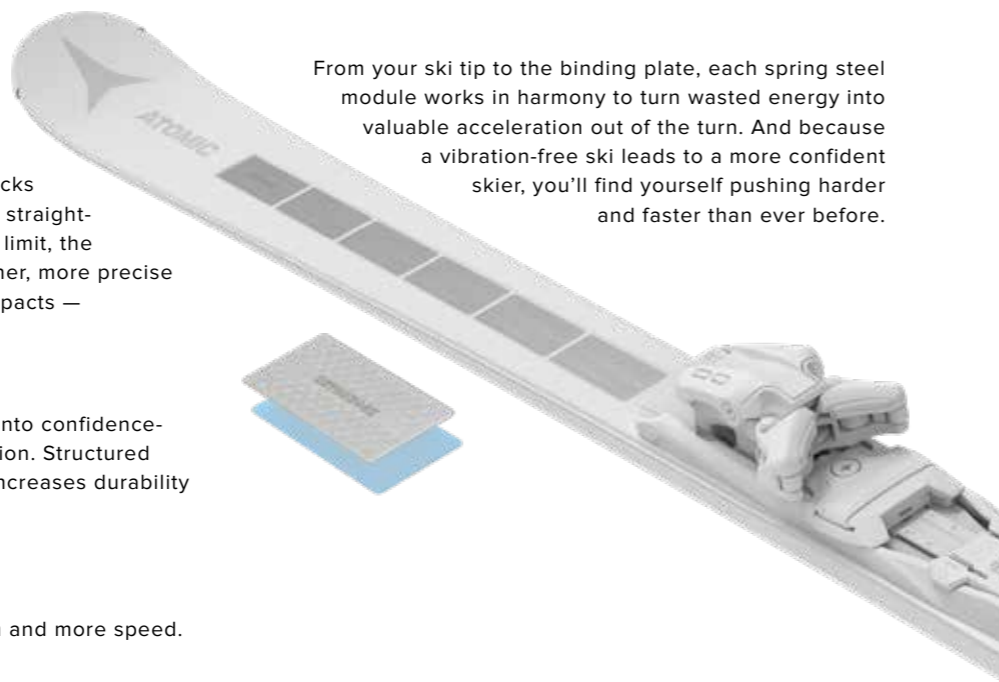


CONSTRUCTION

REVOSHOCK S

Utilizing a series of spring steel modules each encased in impact absorbing elastomer, the revolutionary Revoshock S technology acts like a built-in suspension system for your skis to block distracting shocks before they reach your feet. Whether you're straight-lining groomers or making fast turns at your limit, the race-proven Revoshock S provides a smoother, more precise run. But Revoshock S doesn't just absorb impacts — it rebounds them.

From your ski tip to the binding plate, each spring steel module works in harmony to turn wasted energy into valuable acceleration out of the turn. And because a vibration-free ski leads to a more confident skier, you'll find yourself pushing harder and faster than ever before.



TOPSHEET

Redster Revoshock turns unwanted shocks into confidence-building stability and unparalleled acceleration. Structured topsheet: A structured topsheet massively increases durability and gives a high quality finish.

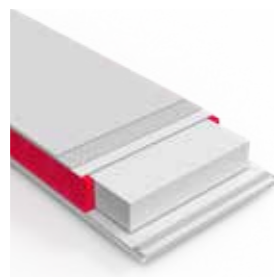
BASE

World Cup Base Finish
World Cup-level grinding means less friction and more speed.

SIDEWALLS

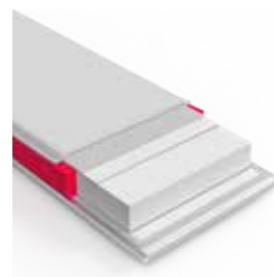
FULL SIDEWALL

Full sidewall runs across the full length of the ski for precise steering.



DURA CAP SIDEWALL

Sidewall from base to top sheet, for controlled power transmission and great edge grip. The rounded shape of the Dura Cap is a fantastic durability feature as it picks up fewer dents and dings.



CORE

ULTRA POWER WOODCORE

Made from strong beech and lightweight poplar – for supreme running stability and agility in our racing skis.



POWER WOODCORE

A sporty, dynamic ash and poplar woodcore that adds a ton of stability and dampens vibrations at speed.



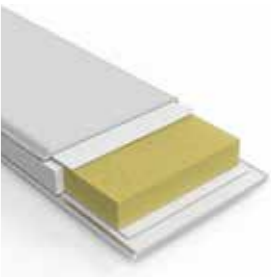
LIGHT WOODCORE

Made from Poplar wood, this core optimizes the ski's weight without sacrificing any shock absorption or stability.



DENSOLITE CORE

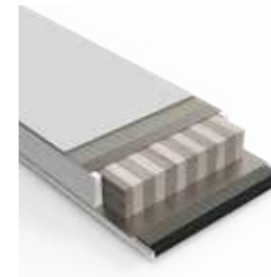
A foam core that's agile and dampens vibrations – for effortless skiing.



LAMINATE

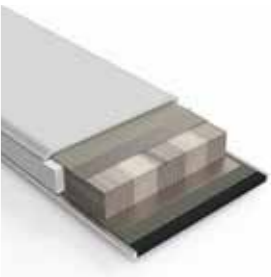
ULTRA TI POWERED

Our World Cup, athlete-proven technology Ultra Titanium Powered with updated double bonding is a Titanal laminate that runs from sidewall to sidewall adding stability, torsional rigidity and edge grip.



TI POWERED

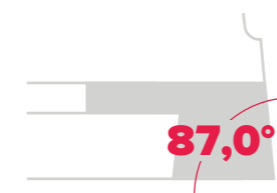
A Titanal layer above and below the core creates supreme shock absorption, strong running stability and high torsional flex.



EDGE ANGLES

SIDE EDGE ANGLE

Precisely tuned edges are an important part of ski performance. A dull edge cannot penetrate the snow surface and will skid through a turn. An edge that is too sharp will grab and catch the snow surface creating unstable performance. Our skis are prepared with a side edge angle of 87.0° for more intuitive handling, easier skiing and better grip on hard snow and ice.



BASE EDGE ANGLE

All skis from our factory are delivered with steel edges that have been carefully machined with a precise base edge bevel for specific performance characteristics. For our FIS skis we're using base edge angles from 0.5° (SL) to 0.8° (GS and JR) and 1.0° (SG and DH). They lightly lift the ski edges off the snow for easy turning while maintaining excellent edge grip and aggressive tracking throughout the turn.



ICON



Immediate power

Delivering immediate power while allowing for more reactivity and response throughout the entire ski, Centralized Power Transfer enables the racer to be in better control of the ski by strategically placing the binding interface directly under the boot to centralize and optimize power transmission.

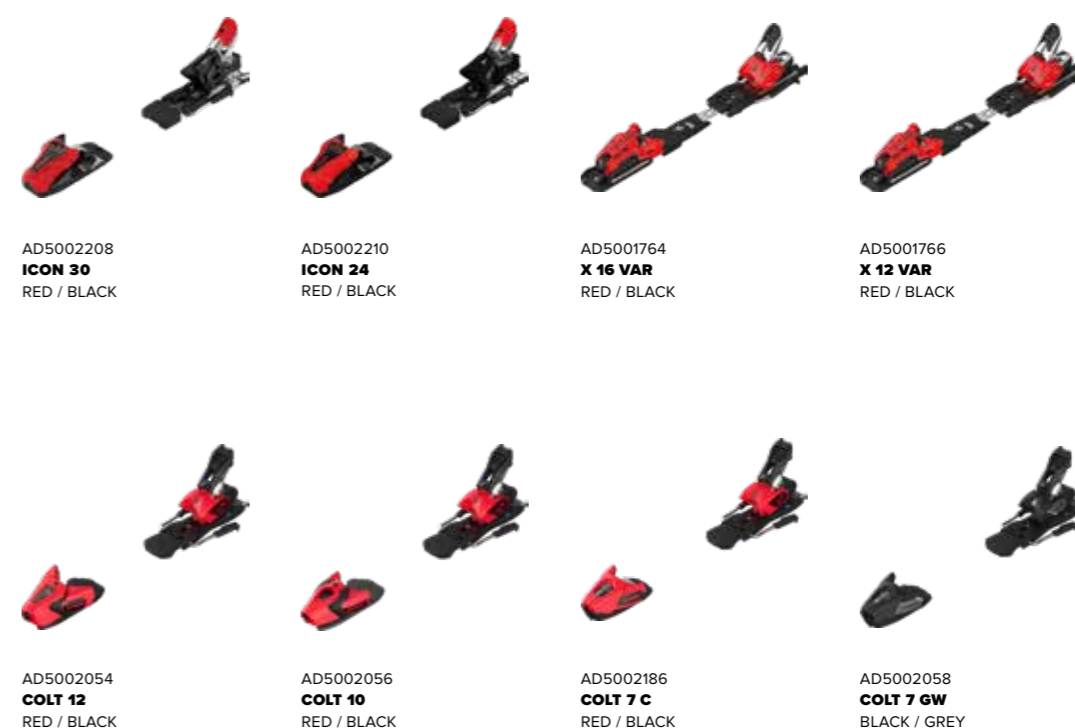
Built to win

A proven podium winner on the World Cup circuit, Icon has been adopted by some of the fastest skiers on the mountain. Built to handle the toughest race course conditions, Icon provides the highest level of performance without negatively influencing tolerance or rebound.

The future of race

One binding for all racing disciplines, Icon has been meticulously engineered to meet the constantly evolving conditions in top-level racing. Directing every ounce of energy immediately to the ski, Icon provides superior performance, agility and durability on hard and icy surfaces.

BINDINGS TECHNICAL SPECIFICATIONS

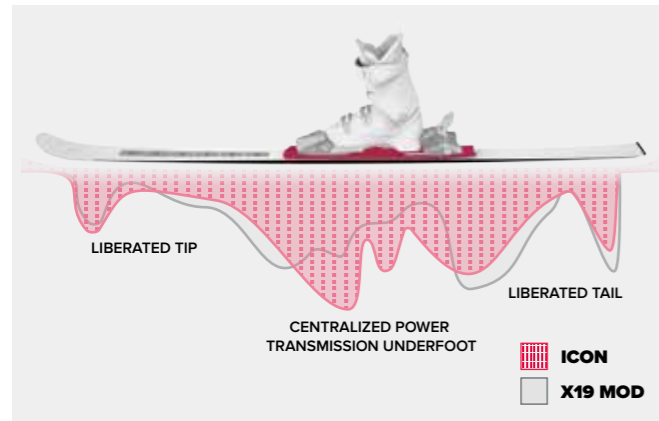


PRODUCT	ART. NO. / COLOR	DIN SCALE	RECOM. SKIER WEIGHT	ADJUSTM. RANGE (mm)	BRAKE WIDTH	WEIGHT (per Bind.)	BINDING / BOOT COMP.	FEATURES	PRICES
ICON 30	AD5002208 Red / Black	20-30	>95kg >209lbs	262-361	X75	1425g	Alpine A (Adult)	Automatic Toe Adaptation, Locking Brakes, Centralized Power Transfer, Elevated Brakes, Automatic Toe Height Adjustment	
ICON 24	AD5002210 Red / Black	14-24	>95kg >209lbs	262-361	X75	1425g	Alpine A (Adult)	Automatic Toe Adaptation, Locking Brakes, Centralized Power Transfer, Elevated Brakes, Automatic Toe Height Adjustment	
X 16 VAR	AD5001764 Red / Black	8-16	42-120kg 92-264lbs	260-364	B70	1480g	Alpine A (Adult)	Locking Brakes, Full Flex, Variable Positioning (VAR), Elevated Brakes, TÜV certified	
X 12 VAR	AD5001766 Red / Black	4-12	42-120kg 92-264lbs	260-364	B70	1470g	Alpine A (Adult)	Locking Brakes, Full Flex, Variable Positioning (VAR), Elevated Brakes, TÜV certified	
COLT 12	AD5002054 Red / Black	4-12	42-120kg 92-264lbs	28	B75	1050g	Alpine A (Adult)	Automatic Toe Adaptation, Locking Brakes, Low Profile Chassis, XL Wings, Elevated Brakes, Automatic Toe Height Adjustment, TÜV certified	
COLT 10	AD5002056 Red / Black	3-10	30-107kg 66-235lbs	28	B75	970g	Alpine A (Adult)	Automatic Toe Adaptation, Locking Brakes, Low Profile Chassis, Elevated Brakes, Automatic Toe Height Adjustment, TÜV certified	
COLT 7 C	AD5002186 Red / Black	2-7,5	22-85kg 44-187lbs	28	B75	860g	Alpine C (Child) + GripWalk C (Child)	Automatic Toe Adaptation, Locking Brakes, Light Construction, Race Pedal, Automatic Toe Height Adjustment, TÜV certified	
COLT 7 GW	AD5002058 Black / Grey	2-7,5	22-85kg 44-187lbs	28	B75 B90 B100	860g	Alpine A (Adult) + GripWalk A (Adult) + Alpine C (Child) + GripWalk C (Child)	Light Construction, Race Kit Compatible, Automatic Toe Adaptation, Locking Brakes, Automatic Toe Adaption, TÜV certified	

* available only in combination with a ski

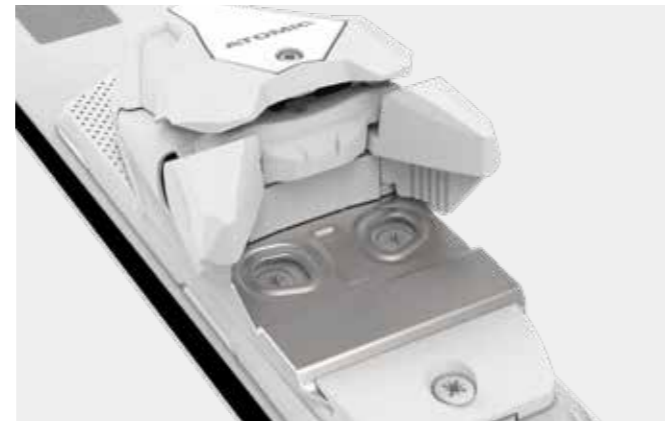
BINDING TECHNOLOGY

ICON



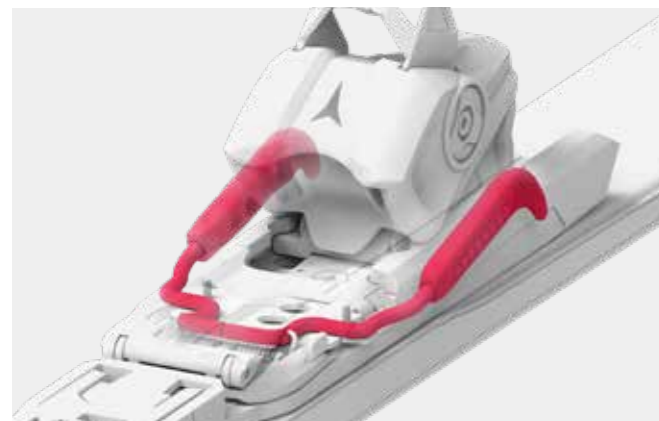
CENTRALIZED POWER TRANSFER

A wider base plate and race mounting pattern strategically position the binding screws directly under the boot to centralize and optimize power transmission. Delivering immediate power underfoot while allowing for more reactivity and response throughout the entire length of the ski, Centralized Power Transfer enables the racer to be in better control of the ski throughout the turn – in every discipline and type of course setting.



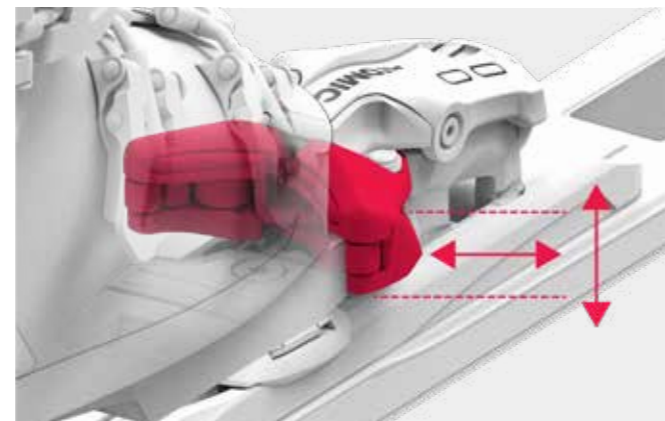
METAL RACE PEDAL

Designed to deliver the best power transfer from boot to binding, Metal Race Pedal allows the boot to sit directly on the AFD for more direct energy transmission.



ELEVATED BRAKES

Our Elevated Brakes get up and out of the way, tucked in closer to the heelpiece of your binding, letting you ski more aggressive edge angles with less risk of catching the snow.



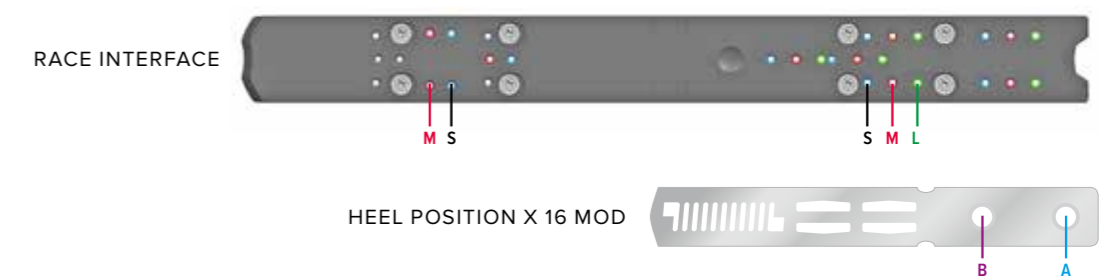
AUTOMATIC TOE ADAPTION

The toe adapts automatically to your alpine normed boot height and width and ensures constant release values, even on worn out boots.

MOUNTING GUIDE

RACE INTERFACE

X 16 VAR / X 12 VAR					
SOLE LENGTH (mm)	POSITION TOE	POSITION HEEL	SOLE LENGTH (mm)	POSITION TOE	POSITION HEEL
264 – 314	S	S	296 – 343	M	M
282 – 314	M	S	314 – 360	M	L

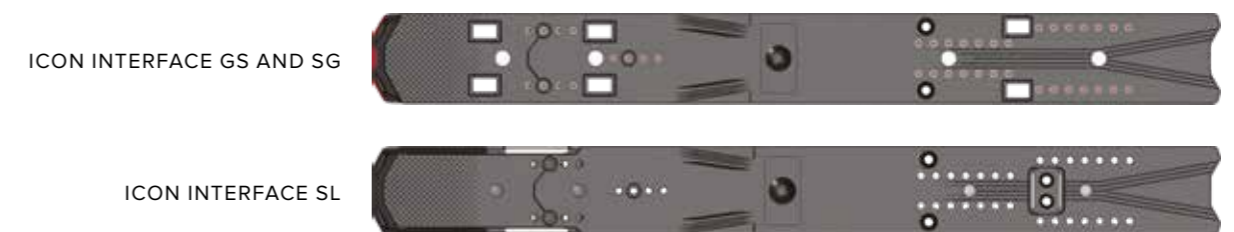


ICON INTERFACE

BOOT SOLE LENGTH:

Mounting information on the plate

ICON 30 / ICON 24					
	POSITION TOE	POSITION HEEL		POSITION TOE	POSITION HEEL
SOLE LENGTH (mm)	262 – 271	262 – 281	SOLE LENGTH (mm)	272 – 341	312 – 321
SOLE LENGTH (mm)	272 – 341	282 – 291	SOLE LENGTH (mm)	272 – 341	322 – 331
SOLE LENGTH (mm)	272 – 341	292 – 301	SOLE LENGTH (mm)	342 – 361	332 – 361
SOLE LENGTH (mm)	272 – 341	302 – 311			



JUNIOR RACE PLATE (J-RP2)

BOOT SOLE LENGTH:

Mounting information on the plate for COLT 7 C, COLT 10, COLT 12

- A:** > 217mm – 246mm
- B:** > 237mm – 266mm
- C:** > 256mm – 285mm
- D:** > 276mm – 305mm



REDSTER FAMILY



REDSTER STI

This highly anatomical 93mm narrow last is the lowest volume fit and has the ideal stability and stiffness for lighter racers

REDSTER TI

This highly anatomical 95mm narrow last is the most successful race boot in the modern era and the current choice of most of our World Cup athletes.

REDSTER CS

This narrow 96mm last features more space in the forefoot and navicular areas for increased comfort while still retaining optimum foot hold for powerful skiing.

THE REDSTER THREAD



Consistent liner constructions across all 3 fits



Same forward lean and ramp angle across all 3 fits



Same stance in all 3 fits

BOOTS TECHNICAL SPECIFICATIONS

REDSTER TI 95MM RACING LAST



PRODUCT	REDSTER TI 150 LIFTED	REDSTER TI 130	REDSTER TI 110
ART. NO.	AE5025980	AE5024340	AE5024360
COLOR	Red / Black	Red / Black	Red / Black
SIZE RANGE	22/22.5 - 29/29.5	22/22.5 - 29/29.5	22/22.5 - 29/29.5
SHELL TECHNOLOGY	Progressive Race Shell, +5mm Lifted Sole Height, True Size Mondo 22	Progressive Race Shell, True Size Mondo 22	Progressive Race Shell, True Size Mondo 22
CUFF TECHNOLOGY	Power Control, Dual-Sided Cuff Alignment	Power Control, Dual-Sided Cuff Alignment	Power Control, Dual-Sided Cuff Alignment
SHELL / CUFF MATERIAL	PU - H / PU - B	PU / PU	PU / PU
CUFF HEIGHT	Regular Cuff - All Sizes	Regular Cuff - All Sizes	Regular Cuff - All Sizes
LINER MODEL	Mimic World Cup	Mimic World Cup	World Cup
LINER TECHNOLOGY	Mimic, V3 Tongue System, 3D Stretch Toe Box, Full Microfiber Outer	Mimic, V3 Tongue System, 3D Stretch Toe Box, Full Microfiber Outer	V3 Tongue System, 3D Stretch Toe Box, Full Microfiber Outer
POWER STRAP	55mm Professional Dual Strap	55mm Professional Dual Strap	35mm Velcro Strap
CUFF CLOSURE	7000-Series Aluminium Buckles	7000-Series Aluminium Buckles	7000-Series Aluminium Buckles
SHELL CLOSURE	7000-Series Aluminium Buckles	7000-Series Aluminium Buckles	7000-Series Aluminium Buckles
LAST / FIT	95mm Racing Last	95mm Racing Last	95mm Racing Last
FORWARD LEAN SHELL ROTATION	16° (Default) / 18° / 0°	16° (Default) / 18° / 0°	16° (Default) / 18° / 0°
BOOT SOLE	Racing Sole (non-replaceable)	Racing Sole (non-replaceable)	Racing Sole (non-replaceable)
NORM	Not in compliance with Alpine Norm ISO 5355 - Grind before Use!	Alpine Norm ISO 5355 - Type A	Alpine Norm ISO 5355 - Type A
WEIGHT / MONDO SIZE	2.350g / 26-26.5	2.222g / 26-26.5	2.178g / 26-26.5
WHAT'S IN THE BOX	Size Adjuster, 2nd Power Control Screw, Liner Laces, Liner Spoiler	Size Adjuster, 2nd Power Control Screw, Liner Laces, Liner Spoiler	Size Adjuster, 2nd Power Control Screw, Liner Laces, Liner Spoiler
PRICES			

REDSTER STI 93MM RACING LAST



PRODUCT	REDSTER STI 150 LIFTED	REDSTER STI 130	REDSTER STI 110	REDSTER STI 90 LC	REDSTER STI 70 LC
ART. NO.	AE5025960	AE5024380	AE5024400	AE5024420	AE5024440
COLOR	Red / Black	Red / Black	Red / Black	Red / Black	Red / Black
SIZE RANGE	22/22.5 - 27/27.5	22/22.5 - 27/27.5	22/22.5 - 27/27.5	22/22.5 - 27/27.5	22/22.5 - 27/27.5
SHELL TECHNOLOGY	Slim Race Shell, +5mm Lifted Sole Height, True Size Mondo 22	Slim Race Shell, True Size Mondo 22	Slim Race Shell, True Size Mondo 22	Slim Race Shell, True Size Mondo 22	Slim Race Shell, True Size Mondo 22
CUFF TECHNOLOGY	Power Control, Dual-Sided Cuff Alignment	Power Control, Dual-Sided Cuff Alignment	Power Control, Dual-Sided Cuff Alignment	Power Control, Dual-Sided Cuff Alignment	Dual-Sided Cuff Alignment
SHELL / CUFF MATERIAL	PU - H / PU - B	PU / PU	PU / PU	PU / PU	PU / PU
CUFF HEIGHT	Regular Cuff - All Sizes	Regular Cuff - All Sizes	Regular Cuff - All Sizes	Low Cuff - All Sizes	Low Cuff - All Sizes
LINER MODEL	Mimic World Cup	Mimic World Cup	World Cup	World Cup	World Cup
LINER TECHNOLOGY	Mimic, V3 Tongue System, 3D Stretch Toe Box, Full Microfiber Outer	Mimic, V3 Tongue System, 3D Stretch Toe Box, Full Microfiber Outer	V3 Tongue System, 3D Stretch Toe Box, Full Microfiber Outer	V3 Tongue System, 3D Stretch Toe Box, Full Microfiber Outer	V3 Tongue System, 3D Stretch Toe Box, Full Microfiber Outer
POWER STRAP	55mm Professional Dual Strap	55mm Professional Dual Strap	35mm Velcro Strap	35mm Velcro Strap	35mm Velcro Strap
CUFF CLOSURE	7000-Series Aluminium Buckles	7000-Series Aluminium Buckles	7000-Series Aluminium Buckles	7000-Series Aluminium Buckles	7000-Series Aluminium Buckles
SHELL CLOSURE	7000-Series Aluminium Buckles	7000-Series Aluminium Buckles	7000-Series Aluminium Buckles	7000-Series Aluminium Buckles	7000-Series Aluminium Buckles
LAST / FIT	93mm Racing Last	93mm Racing Last	93mm Racing Last	93mm Racing Last	93mm Racing Last
FORWARD LEAN SHELL ROTATION	16° (Default) / 18° / 0°	16° (Default) / 18° / 0°	16° (Default) / 18° / 0°	16° (Default) / 18° / 0°	16° / 0°
BOOT SOLE	Racing Sole (non-replaceable)	Racing Sole (non-replaceable)	Racing Sole (non-replaceable)	Racing Sole (non-replaceable)	Racing Sole (non-replaceable)
NORM	Not in compliance with Alpine Norm ISO 5355 - Grind before Use!	Alpine Norm ISO 5355 - Type A	Alpine Norm ISO 5355 - Type A	Alpine Norm ISO 5355 - Type A	Alpine Norm ISO 5355 - Type A
WEIGHT / MONDO SIZE	2.219g / 24-24.5	2.186g / 24-24.5	1.918g / 24-24.5	1.850g / 24-24.5	1.798g / 24-24.5
WHAT'S IN THE BOX	Size Adjuster, 2nd Power Control Screw, Liner Laces, Liner Spoiler	Size Adjuster, 2nd Power Control Screw, Liner Laces, Liner Spoiler	Size Adjuster, 2nd Power Control Screw, Liner Laces, Liner Spoiler	Size Adjuster, 2nd Power Control Screw, Liner Laces	Size Adjuster, Liner Laces
PRICES					

BOOTS TECHNICAL SPECIFICATIONS

REDSTER CS 96MM NARROW LAST



REDSTER JR 98MM JUNIOR LAST



PRODUCT	REDSTER CS 130 NEW	REDSTER CS 110 NEW	REDSTER CS 70 LC NEW	REDSTER JR 60 RS	REDSTER JR 60
ART. NO.	AE5029460	AE5029480	AE5029500	AE5025440	AE5025460
COLOR	Red / Black	Red / Black	Red / Black	Red / Black	Red / Black
SIZE RANGE	23/23.5 - 29/29.5	21/21.5 - 29/29.5	21/21.5 - 27/27.5	18/18.5 - 27/27.5	18/18.5 - 27/27.5
SHELL TECHNOLOGY	Memory Fit, Progressive Race Shell, Integrated 3mm Lift	Memory Fit, Progressive Race Shell, Integrated 3mm Lift, True Size Mondo 21, True Size Mondo 22	Memory Fit, Progressive Race Shell, Integrated 3mm Lift, True Size Mondo 21, True Size Mondo 22	Junior Performance Shell	Junior Performance Shell
CUFF TECHNOLOGY	Power Shift Race, Dual-Sided Cuff Alignment	Power Shift Race, Dual-Sided Cuff Alignment	Dual-Sided Cuff Alignment	Progressive Cuff Design	Progressive Cuff Design
SHELL / CUFF MATERIAL	PU / PU	PU / PU	PU / PU	PU / PP	PP / PP
CUFF HEIGHT	Regular Cuff - All Sizes	Regular Cuff - All Sizes	Low Cuff - All Sizes	Low Cuff - All Sizes	Low Cuff - All Sizes
LINER MODEL	Mimic World Cup	Mimic Gold	Select Silver	Select Silver JR	Select Silver JR
LINER TECHNOLOGY	Mimic, V3 Tongue System, 3D Stretch Toe Box, Full Microfiber Outer	Mimic, 3D Stretch Toe Box, Full Microfiber Outer	3D Stretch Toe Box, Full Microfiber Outer	-	-
POWER STRAP	55mm Professional Dual Strap	35mm Velcro Strap	35mm Velcro Strap	30mm Velcro Strap	30mm Velcro Strap
CUFF CLOSURE	7000-Series Aluminium Buckles	7000-Series Aluminium Buckles	7000-Series Aluminium Buckles	6000-Series Aluminium Buckles	6000-Series Aluminium Buckles
SHELL CLOSURE	7000-Series Aluminium Buckles	7000-Series Aluminium Buckles	7000-Series Aluminium Buckles	6000-Series Aluminium Buckles	6000-Series Aluminium Buckles
LAST / FIT	96mm Narrow Last	96mm Narrow Last	96mm Narrow Last	98mm Junior Last	98mm Junior Last
FORWARD LEAN SHELL ROTATION	16° (Default) / 18° / 0°	16° (Default) / 18° / 0°	16° / 0°	15°	15°
BOOT SOLE	Racing Sole (non-replaceable)	Racing Sole (non-replaceable)	Racing Sole (non-replaceable)	JR Grip Pads	JR Grip Pads
NORM	Alpine Norm ISO 5355 - Type A	Alpine Norm ISO 5355 - Type A	Alpine Norm ISO 5355 - Type A	18-21.5 Alpine Norm ISO 5355 - Type C, 22-27.5 Alpine Norm ISO 5355 - Type A	18-21.5 Alpine Norm ISO 5355 - Type C, 22-27.5 Alpine Norm ISO 5355 - Type A
WEIGHT / MONDO SIZE	2.262g / 26-26.5	2.208g / 26-26.5	1.899g / 24-24.5	1.520g / 24-24.5	1.350g / 24-24.5
WHAT'S IN THE BOX	Size Adjuster, 18° Power Shift Race Shim, 2nd Power Shift Race Screw, Liner Laces, Liner Spoiler	Size Adjuster, 18° Power Shift Race Shim, 2nd Power Shift Race Screw	Size Adjuster	Size Adjuster	Size Adjuster

PRICES

REDSTER AFTERMARKET PARTS



REDSTER MIMIC PROFESSIONAL LINER NEW
AZE001952
BLACK/CARBON
SIZES: 22/22.5 - 29/29.5



REDSTER FOAM LINER
AE5017700
BLACK
SIZES: 22/22.5 - 29/29.5



REDSTER PROFESSIONAL DUAL STRAP
AZE001730 / BLACK/RED - S/M
AZE001732 / BLACK/RED - M/L



V³ TONGUE SYSTEM LV FIT
AZE001710 / WHITE - 22-23
AZE001712 / WHITE - 24-25
AZE001714 / WHITE - 26-27
AZE001716 / WHITE - 28-29
AZE001718 / WHITE - 30-31



V³ TONGUE SYSTEM MV FIT
AZE001700 / BLACK - 22-23
AZE001702 / BLACK - 24-25
AZE001704 / BLACK - 26-27
AZE001706 / BLACK - 28-29
AZE001708 / BLACK - 30-31



V³ TONGUE SYSTEM HV FIT
AZE001720 / RED - 22-23
AZE001722 / RED - 24-25
AZE001724 / RED - 26-27
AZE001726 / RED - 28-29
AZE001728 / RED - 30-31



REDSTER SPEED CUFF A HARDNESS NEW
FOR 130 FLEX BOOTS
AZE001954 / 22-23
AZE001956 / 24-25
AZE001958 / 26-27
AZE001960 / 28-29



REDSTER SPEED CUFF B HARDNESS NEW
FOR 150 AND 170 FLEX BOOTS
AZE001962 / 22-23
AZE001964 / 24-25
AZE001966 / 26-27
AZE001968 / 28-29



REDSTER BOOT BLANKET
AZE001610 / S (22-25)
AZE001612 / M (26-29)



REDSTER DUAL COMPONENT LIFTER
AZE001794 / 21-24
AZE001796 / 25-29



REDSTER AR LIFTER KIT
3mm: AZE001262 / 21-24 - AZE001264 / 25-29
5mm: AZE001266 / 21-24 - AZE001268 / 25-29



SHOCKSTOPPER BOOT BOARD FOR REDSTER CS
REDSTER CS
AZE001810

REDSTER RT LIFTER KIT
3mm: AZE001488 / 22-25 - AZE001492 / 26-29
5mm: AZE001490 / 22-25 - AZE001494 / 26-29



PROFESSIONAL FOAMING GUN
AZE001618



MIMIC PROFESSIONAL PODIUM
AM5008771001



PROFESSIONAL BOOT SPREADER
AM5008791001



PROFESSIONAL BOOT PRESS
AM5008781001



BOOT PRESS TOE PUNCH SET
AM5008821001

CANTING



CANTING ASSESSMENT SYSTEM
AM5006331001



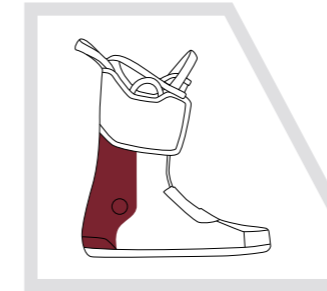
ATOMIC CANTMATE SYSTEM
AM5007781001
80 cm wide x 38 cm deep x 73h cm high

BOOT TECHNOLOGY

MIMIC PROFESSIONAL

Mimic Professional injects advanced foam compounds into revolutionary Mimic liner technology to create a customized fit that forms around the exact shape of the foot. The result is a liner that delivers the supreme fit, unrivaled comfort, and next-level performance.

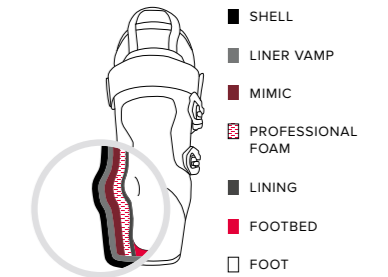
1. HEAT THE MIMIC ZONES IN THE OVEN



2. INJECT PROFESSIONAL FOAM INTO THE LINER



3. MIMIC: NEXT-TO-SHELL FIT; PROFESSIONAL FOAM: NEXT-TO-FOOT FIT



PROFESSIONAL DUAL STRAP

The innovative Professional Dual Strap combines two elements together for secure, balanced performance. Elastic shock absorbing portion smooths out choppy terrain and increases damping while static section provides pure power and energy transmission.



V3 TONGUE SYSTEM

Customizable V3 Tongue System allows you to select the ideal tongue thickness to suit your needs. Choose between Low Volume (LV) fit, Medium Volume (MV) fit and High Volume (HV) fit for the ultimate interface between shin and liner.



PROGRESSIVE RACE SHELL

Our Redster TI and CS boots feature a special shell made from thicker but softer material. This provides a more progressive flex and better damping, plus a more supple feel – making it easier to ski aggressively in all conditions and on all courses.



3D STRETCH TOE BOX

Asymmetrically shaped for left and right, the new 3D Stretch Toe Box takes first fit and customization potential to the next level. Its 'Big Toe Friendly' construction maximizes the liner's available length allowing for a little extra stretch when important millimeters are required to achieve the perfect fit.

REDSTER

REDSTER JR



PRODUCT	ART. NO.	COLOR	SIZES (cm)	SHAFT	GRIP	STRAP	BASKET	TIP	FEATURES	WEIGHT	PRICES
REDSTER RS SL SQS	AJ5005676	Red / Carbon	110, 115, 120, 125, 130, 135	6* Carbon Pole Technology, 3K Kevlar	Ergonomic Redster Grip (2K)	Pro Strap	Race Basket (40mm)	Carbide Tip	Safety Quick Release System, Hand Guard-ready, Ergonomic M-Fit	240g / 120cm	
REDSTER RS GS SQS	AJ5005674	Red / Carbon	110, 115, 120, 125, 130, 135	6* Carbon Pole Technology, Bent Shaft, 3K Kevlar	Ergonomic Redster Grip (2K)	Pro Strap	Race Basket (40mm)	Carbide Tip	Safety Quick Release System, Ergonomic M-Fit	280g / 120cm	
REDSTER ULTRA SQS	AJ5005678	Red / Black	110, 115, 120, 125, 130, 135	6* Carbon Pole Technology	Ergonomic Redster Grip (2K)	Pro Strap	Race Basket (40mm)	Carbide Tip	Safety Quick Release System, Hand Guard-ready, Ergonomic M-Fit	210g / 120cm	
REDSTER CARBON SQS	AJ5005680	Red / Carbon	110, 115, 120, 125, 130, 135	6* Carbon Pole Technology	Ergonomic Redster Grip (2K)	Pro Strap	Race Basket (40mm)	Carbide Tip	Safety Quick Release System, Hand Guard-ready, Ergonomic M-Fit	220g / 120cm	
REDSTER RS SQS	AJ5005684	Red / Black	110, 115, 120, 125, 130, 135	5* Aluminum Pole Technology	Ergonomic Redster Grip (2K)	Premium Strap	Race Basket (40mm)	Carbide Tip	Safety Quick Release System, Hand Guard-ready, Ergonomic M-Fit	230g / 120cm	
REDSTER GS SQS	AJ5005682	Red / Black	110, 115, 120, 125, 130, 135	5* Aluminum Pole Technology, Bent Shaft	Ergonomic Redster Grip (2K)	Premium Strap	Race Basket (40mm)	Carbide Tip	Safety Quick Release System, Ergonomic M-Fit	300g / 120cm	
REDSTER	AJ5005686	Red	110, 115, 120, 125, 130, 135	4* Aluminum Pole Technology	Ergonomic Redster Grip	Essential Strap	Race Basket (60mm)	Steel Tip	Ergonomic M-Fit	255g / 120cm	
REDSTER HAND GUARD SYSTEM	AJ5005724	Red				Pro Strap			Compatible with all Redster SQS models	130g	
REDSTER JR SQS	AJ5005722	Red	70, 75, 80, 85, 90, 95, 100, 105, 110, 115, 120	5* Aluminum Pole Technology	Ergonomic Redster Grip (2K)	Premium Strap	Race Basket (40mm)	Steel Tip	Safety Quick Release System, Hand Guard-ready, Ergonomic JR Fit	150g / 90cm	
REDSTER GS JR	AJ5005720	Red	90, 95, 100, 105, 110	4* Aluminum Pole Technology, Bent Shaft	Ergonomic JR Grip (1K)	Essential Strap	Race Basket (40mm)	Steel Tip	Ergonomic JR Fit	150g / 90cm	
REDSTER JR	AJ5005718	Red	70, 75, 80, 85, 90, 95, 100, 105	3* Aluminum Pole Technology	Ergonomic JR Grip (1K)	Essential Strap	Race Basket (40mm)	Steel Tip	Ergonomic JR Fit	150g / 90cm	

REDSTER SL



Feel safe as you race

The unique combination of AMID, Holo Core and an extra-durable PC Racecase delivers World Cup level protection. Redster SL CTD also features Shocksense for monitoring impact-damage from falls and gates. Dial up your safety, dial up your speed.

Protect yourself with the perfect fit

The Redster SL is so snug you'll forget you're wearing it! It comes with a 360° Fit System and Atomic Live Fit – our unique memory foam system that molds to your head shape for an instant individual fit. Ready to face any race.

Worn by our World Cup athletes

Speed and safety are in every detail of the Redster SL. It also comes with an adjustable Chin Guard in the box. It's the new Atomic helmet for all slalom racers, from young guns to our World Cup pros.

TECHNICAL SPECIFICATIONS

RACE

REDSTER SL CTD



AN5006302
REDSTER SL CTD
BLACK



AN5006306
REDSTER SL CTD
DARK RED



AN5006304
REDSTER SL CTD
LIGHT GREY / GREY

REDSTER SL



AN5006308
REDSTER SL
BLACK



AN5006312
REDSTER SL
RED



AN5006310
REDSTER SL
WHITE / GREY



AN5006502
REDSTER SL NEW
TEAL BLUE



AN5006504
REDSTER SL NEW
PURPLE

REDSTER WC CTD



AN5006116
REDSTER WC CTD
BLACK



AN5006120
REDSTER WC CTD
RED



AN5006122
REDSTER WC CTD
GREY



AN5006124
REDSTER CTD
BLACK



AN5006128
REDSTER CTD
RED

REDSTER



AN5006126
REDSTER CTD
WHITE



AN5006132
REDSTER
BLACK



AN5006136
REDSTER
RED



AN5006134
REDSTER
WHITE



AN5006138
REDSTER
GREY

PRODUCT	ART. NO. COLOR	SIZES - WEIGHT	SAFETY TECH.	FIT	CONSTRUCTION / VENTING / LINING	EXTRAS	CERTIFICATION	PRICES
REDSTER SL CTD	AN5006302 Black	S (51-55)	Shocksense, AMID, Holo Core	360° Fit System, Live Fit, 3D Molded Ear Pads	PC Racecase / Aircon Venting / Remove-/Washable Full Cap Liner, 3M™ X-Static Lining	Atomic Shocksense App, Impact Assessment, SOS Alert Function, Magnetic Fidlock® Buckle, Adjustable Chin Guard included, Removable Goggle Clip, Helmet Bag	ASTM F 2040, CE EN 1077:2007 CLASS B	
	AN5006306 Dark Red	M (55-59)						
	AN5006304 Light Grey / Grey	L (59-63) XL (63-65) Black only -						
REDSTER SL	AN5006308 Black	S (51-55)	AMID, Holo Core	360° Fit System, Live Fit, 3D Molded Ear Pads	PC Racecase / Aircon Venting / Remove-/Washable Full Cap Liner, 3M™ X-Static Lining	Magnetic Fidlock® Buckle, Adjustable Chin Guard included, Helmet Bag	ASTM F 2040, CE EN 1077:2007 CLASS B	
	AN5006312 Red	M (55-59)						
	AN5006310 White / Grey	L (59-63)						
	AN5006502 Teal Blue	XL (63-65) Black only -						
	AN5006504 Purple	380g / S						

PRODUCT	ART. NO. COLOR	SIZES - WEIGHT	SAFETY TECH.	FIT	CONSTRUCTION / VENTING / LINING	EXTRAS	CERTIFICATION	PRICES
REDSTER WC CTD	AN5006116 Black	XS (51-53)	Shocksense, AMID, Holo Core	360° RS Fit System, Live Fit, 3D Molded Ear Pads	Carbon Racecase / Aircon Venting / RS Full Cap Liner, Merino 3M™ X-Static Lining	Atomic Shocksense App, Impact Assessment, SOS Alert Function, Magnetic Fidlock® Buckle, Attachable RS Helmet Bag, Acoustic Plates, Chin Guard Compatible, Removable Goggle Clip	ASTM F 2040, CE EN 1077:2007 CLASS A, FIS RH 2013	
	AN5006120 Red	S (53-55)						
	AN5006122 Grey	M (55-57)						
	-	L (57-59) XL (59-61) XXL (61-63) -						
REDSTER CTD	AN5006124 Black	XS (51-53)	Shocksense, AMID, Holo Core	360° RS Fit System, Live Fit, 3D Molded Ear Pads	ABS Racecase / Aircon Venting / RS Full Cap Liner, 3M™ X-Static Lining	Atomic Shocksense App, Impact Assessment, SOS Alert Function, Magnetic Fidlock® Buckle, Attachable RS Helmet Bag, Acoustic Plates, Chin Guard Compatible, Removable Goggle Clip	ASTM F 2040, CE EN 1077:2007 CLASS A, FIS RH 2013	
	AN5006128 Red	S (53-55)						
	AN5006126 White	M (55-57)						
	-	L (57-59) XL (59-61) XXL (61-63) -						
	-	700g / S						
REDSTER	AN5006132 Black	XS (51-53)	AMID, Holo Core	360° RS Fit System, Live Fit, 3D Molded Ear Pads	ABS Racecase / Aircon Venting / RS Full Cap Liner, 3M™ X-Static Lining	Magnetic Fidlock® Buckle, Acoustic Plates, Chin Guard Compatible, Removable Goggle Clip, Helmet Bag	ASTM F 2040, CE EN 1077:2007 CLASS A, FIS RH 2013	
	AN5006136 Red	S (53-55)						
	AN5006134 White	M (55-57)						
	AN5006138 Grey	L (57-59)						
	AN5006498 Teal Blue	XL (59-61) XXL (61-63) -						
	AN5006500 Purple	700g / S						

TECHNICAL SPECIFICATIONS

RACE

RACE JUNIOR



AN5006498
REDSTER NEW
TEAL BLUE



AN5006500
REDSTER NEW
PURPLE



AN5006298
REDSTER JR CTD
BLACK / GREY



AN5006300
REDSTER JR CTD
LIGHT GREY / GREY



AN5006228
REDSTER CHIN GUARD SYSTEM
BLACK

REDSTER JR



AN5006142
REDSTER JR
BLACK



AN5006146
REDSTER JR
RED



AN5006430
REDSTER JR NEW
TEAL BLUE



AN5006144
REDSTER JR
WHITE

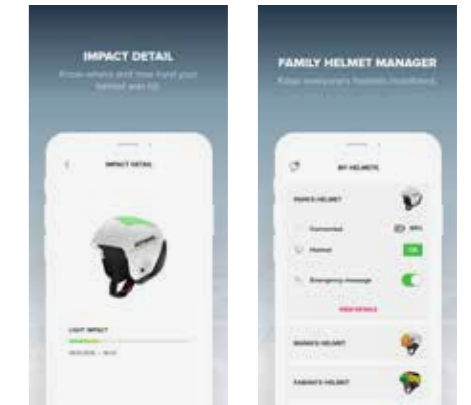
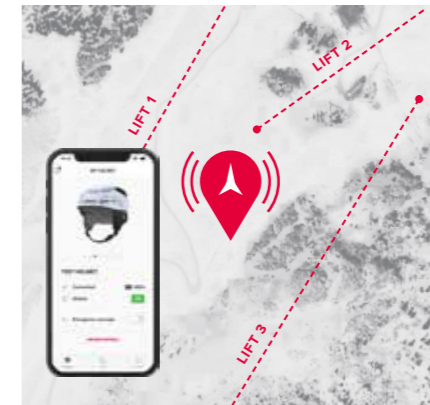
PRODUCT	ART. NO. COLOR	SIZES - WEIGHT	SAFETY TECH.	FIT	CONSTRUCTION / VENTING / LINING	EXTRAS	CERTIFICATION	PRICES
REDSTER JR CTD	AN5006298 Black / Grey	S/M (51-55)	Shocksense, Holo Core	360° Fit System, Live Fit, 3D Molded Ear Pads	ABS Racecase / Aircon Venting / RS Liner	Atomic Shocksense App, Impact Assessment, SOS Alert Function, Acoustic Plates, Chin Guard Compatible, Removable Goggle Clip, Helmet Bag	ASTM F 2040, CE EN 1077:2007 CLASS A, FIS RH 2013	
	AN5006300 Light Grey / Grey	M/L (55-59)						
REDSTER JR	AN5006142 Black	S/M (51-55) M/L (55-59)	Holo Core	360° Fit System, Live Fit, 3D Molded Ear Pads	ABS Racecase / Aircon Venting / RS Liner	Acoustic Plates, Chin Guard Compatible, Helmet Bag	ASTM F 2040, CE EN 1077:2007 CLASS A, FIS RH 2013	
	AN5006146 Red							
	AN5006430 Teal Blue							
	AN5006144 White							
REDSTER CHIN GUARD SYSTEM	AN5006228 Black	one Size fits all				Compatible with: Redster WC CTD, Redster CTD, Redster, Redster JR CTD, Redster JR		

HELMETS TECHNOLOGY

SURPREME PROTECTION

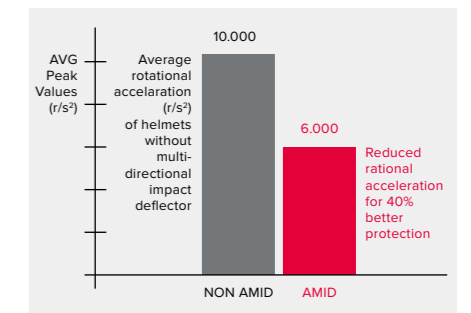
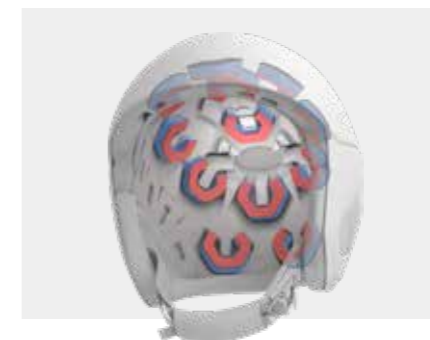
SHOCKSENSE

Shocksense uses a sensor inside your helmet to transmit impact data to the Atomic Shocksense App. It determines whether you need to replace the helmet and can send an SOS alert, as well as your GPS location, to emergency contacts. Meaning you're free to push your limits with total confidence in your equipment.



AMID

AMID stands for Atomic Multi-directional Impact Deflector and is our own development. It's a revolutionary dual-density foam system which is fixed to the helmet's core and free to move in all directions. This means better protection against impacts from all directions – as the foam cushions energy right at impact, then continues to deflect energy away from the head through its movement. By absorbing energy through the whole impact, it provides a new level of protection, whether the impact is high speed or low speed, direct or angled.



INSTANT FIT

360° RS FIT SYSTEM

The 360° RS Fit System lets you tailor your helmet to exactly your head shape, size and height. For an extra layer of fine-tuning, it also comes with customizable Live Fit pads on each side of your head that allow you to perfectly fit the helmet to a more oval or round head shape.



360° FIT SYSTEM + LIVE FIT

Live Fit pads form a wide band of memory foam that adapts precisely to your head for an instant individual fit. The progressive height-adjustable 360° Fit System lets you finetune the helmet to your head size – and also your headshape. It's 100% personalized comfort guaranteed for every skier.



RACE CONSTRUCTION

CARBON RACECASE

The handcrafted Carbon Racecase is supremely stiff, strong and super light. Featuring a multi-directional layup for unrivaled protection and structural stability, it's specifically designed for racing.



ABS RACECASE

The injection-molded ABS Racecase is a stiff and strong shell, designed for guaranteed protection when skiing at speed.



PC RACECASE

Our super durable PC Racecase delivers world-cup level protection. It's a strong outer layer that provides protection from the high impacts you can get while racing, including hitting gates at speed.



TECHNICAL SPECIFICATIONS

REDSTER

REDSTER WC HD



AN5106378
REDSTER WC HD NEW
BLACK
GREEN HD
CAT. HD 3-2
—
3 EXTRA LENSES

AN5106380
REDSTER WC HD NEW
RED
RED HD
CAT. HD 3-2
—
3 EXTRA LENSES

REDSTER HD



AN5106382
REDSTER HD NEW
BLACK
GREEN HD
CAT. HD 3-2
—
1 EXTRA LENS

AN5106386
REDSTER HD NEW
RED
RED HD
CAT. HD 3-2
—
1 EXTRA LENS

AN5106384
REDSTER HD NEW
LIGHT GREY
SILVER HD
CAT. HD 3-2
—
1 EXTRA LENS

AN5106388
REDSTER HD NEW
TEAL BLUE
SILVER HD
CAT. HD 3-2
—
1 EXTRA LENS

AN5106390
REDSTER HD NEW
PURPLE
PINK COPPER HD
CAT. HD 3-2
—
1 EXTRA LENS

KIDS

REDSTER WC HD JR



AN5106392
REDSTER HD NEW
BLACK
GREEN HD
CAT. HD 3-2
—
2 EXTRA LENSES

AN5106394
REDSTER HD NEW
RED
RED HD
CAT. HD 3-2
—
2 EXTRA LENSES

COUNT JR HD RS



AN5106100
COUNT JR HD RS
RED
PINK/COPPER HD
CAT. HD 3-2
—
2 EXTRA LENSES

PRODUCT	ART. NO.	COLOR	FIT	LENS TYPE	CAT.	VLT	WEATHER	FRAME AND EXTRAS	LENS TECHNOLOGY	PRICES
REDSTER WC HD	AN5106378	Black	Large	Green HD, Extra L.1: Blue HD, Extra L.2: Yellow/Blue HD, Extra L.3: Clear	HD 3-2	—	Performs best in Cat.3-2	Live Fit Frame, Over The Glasses Compatible (OTG LITE), Adaptive LF Tri-Layer Face Foam, Vent Foam, Silicone-coated Strap, Incl. Microfiber Goggle Bag, WC Lens Setup	HD Lens Technology, Toric Double Lens, Sealed Lens System, Anti-scratch Outer Lens (PC), Hydrophobic Lens Coating, Anti-fog Inner Lens (AC)	
	AN5106380	Red	Large	Red HD, Extra L.1: Blue HD, Extra L.2: Yellow/Blue HD, Extra L.3: Clear	HD 3-2	—	Performs best in Cat.3-2			
REDSTER HD	AN5106382	Black	Large	Green HD, Extra L.: Yellow/Blue HD	HD 3-2	—	Performs best in Cat.3-2	Live Fit Frame, Over The Glasses Compatible (OTG LITE), Adaptive LF Tri-Layer Face Foam, Vent Foam, Silicone-coated Strap, Extra Lens included	HD Lens Technology, Toric Double Lens, Sealed Lens System, Anti-scratch Outer Lens (PC), Hydrophobic Lens Coating, Anti-fog Inner Lens (AC)	
	AN5106386	Red	Large	Red HD, Extra L.: Yellow/Blue HD	HD 3-2	—	Performs best in Cat.3-2			
	AN5106384	Light Grey	Large	Silver HD, Extra L.: Yellow/Blue HD	HD 3-2	—	Performs best in Cat.3-2			
	AN5106388	Teal Blue	Large	Silver HD, Extra L.: Yellow/Blue HD	HD 3-2	—	Performs best in Cat. 2-1			
	AN5106390	Purple	Large	Pink Copper HD, Extra L.: Yellow/Blue HD	HD 3-2	—	Performs best in Cat.3-2			
REDSTER WC HD JR	AN5106392	Black	Medium	Green HD, Extra L.1: Yellow/Blue HD, Extra L.2: Clear	HD 3-2	—	Performs best in Cat.3-2	Live Fit Frame, Over The Glasses Compatible (OTG LITE), Adaptive LF Tri-Layer Face Foam, Vent Foam, Silicone-coated Strap, Incl. Microfiber Goggle Bag, WC Lens Setup	HD Lens Technology, Toric Double Lens, Easy Lens Switch, Anti-scratch Outer Lens (PC), Hydrophobic Lens Coating, Anti-fog Inner Lens (AC)	
	AN5106394	Red	Medium	Red HD, Extra L.1: Yellow/Blue HD, Extra L.2: Clear	HD 3-2	—	Performs best in Cat.3-2			
COUNT JR HD RS	AN5106100	Red	Junior	Pink/Copper HD, Extra L.1: Pink/Blue Stereo, Extra L.2: Clear Lens	HD 3-2	—	Performs best in cat. 3-2	Live Fit Frame, Over The Glasses Compatible (OTG LITE), Adaptive LF Tri-Layer Face Foam, Silicone-coated Strap, Incl. Microfiber Goggle Bag, WC Lens Setup	HD Lens Technology, Spherical Double Lens, Easy Lens Switch, Anti-scratch Outer Lens (PC), Hydrophobic Lens Coating, Anti-fog Inner Lens (AC)	

SEE BETTER. SKI BETTER.

With over two million working parts, the human eye is the most complex sensory organ of all. And to ensure a clear line of sight in even the most extreme mountain conditions, Atomic lens technology is just as advanced. As skiers ourselves, we know what skiers need, and we know that it all starts with clear vision. Applying our rigorous technical approach, we've designed, tested and perfected our goggles to help you progress, with HD lens tech to enhance color and contrast in all conditions.

HD LENS TECHNOLOGY

Engineered at our design center in Austria, HD lens technology is a proprietary innovation from Atomic that provides incredible depth perception for crystal clear vision in all light conditions. As skiers ourselves, we know from experience that flat light reduces confidence by making it harder to pick out variations in terrain. We developed our HD lens technology to dial up color, contrast and clarity like never before. Micro-crystals within the lens divide white light into its six spectral colors, enhancing the sensitive red and blue ones to radically improve depth perception, reduce eye fatigue and build your confidence in all conditions.



FRAME TECHNOLOGY



DIFFERENT FRAME SIZES

As well as different styles, our goggles come in different frame sizes. Ready to fit all face shapes.



SEALED LENS SYSTEM

The new Seald Lens System shuts out wind and water so even on powder days your goggles stay airtight: zero moisture, zero fogging, max visibility. It also allows you to switch lenses easily when needed.

BODY PROTECTION TECHNICAL SPECIFICATIONS

LIVE SHIELD VEST AMID MEN



AN5205034
LIVE SHIELD VEST AMID M
ALL BLACK



AN5205012
LIVE SHIELD VEST AMID M
RED

LIVE SHIELD VEST AMID WOMEN



AN5205038
LIVE SHIELD VEST AMID W
BLACK

LIVE SHIELD SHORTS



AN5205026
LIVE SHIELD SHORTS
GREY / BLACK

JUNIOR



AN5205032
LIVE SHIELD AMID JR
RED

PRODUCT	ART. NO.	COLOR	SIZES	SAFETY TECHN.	WEIGHT	FABRIC	FIT	EXTRAS	PRICES
LIVE SHIELD VEST AMID M	AN5205034	All Black	S	AMID Body	590g / S	Elastic Air Mesh, 4-Way Stretch Lycra	Ergonomic Slim Fit, Removable and Height Adjustable Belt	Highly Breathable, Ultra Flexible, Washable, Lightweight	
	AN5205012	Red	M L XL						
LIVE SHIELD VEST AMID W	AN5205038	Black	XS S M L	AMID Body	520g / S	Elastic Air Mesh, 4-Way Stretch Lycra	Ergonomic Slim Fit, Removable and Height Adjustable Belt	Highly Breathable, Ultra Flexible, Washable, Lightweight	
LIVE SHIELD SHORTS	AN5205026	Grey / Black	XXS XS S M L	Multi-density 3-Layer Foam, Removable Coccyx Pads	390g / S	Elastic Air Mesh, 4-Way Stretch Lycra	Active Thermo Fit	Breathable, Flexible, Washable, Ultra Lightweight	
LIVE SHIELD AMID JR	AN5205032	Red	S M L	AMID Body	520g / S	Elastic Air Mesh, 4-Way Stretch Lycra	Ergonomic Slim Fit, Removable and Height Adjustable Belt	Highly Breathable, Ultra Flexible, Washable, Lightweight	

BAGS AND PACKS TECHNICAL SPECIFICATIONS

TECHNICAL



AL5045710
LAPTOP PACK
BLACK



AL5045720
LAPTOP PACK
BLACK DARK RED



AL5045810
TRAVEL PACK
BLACK



AL5047820
DUFFLE BAG 40L
BLACK



AL5047920
DUFFLE BAG 60L
BLACK



AL5047520
CABIN TROLLEY
BLACK / BLACK



AL5047420
TROLLEY 90L
BLACK / BLACK



AL5047410
TROLLEY 90L
RED / RIO RED



AL5047310
RS TRUNK 130L
RED / RIO RED

PRODUCT	ART. NO.	COLOR	VOL.	DIMENSIONS H x L x W	WEIGHT	FABRIC	CONSTRUCTION	FEATURES	PRICES
LAPTOP PACK	AL5045710	Black	20l	51x30x16cm	1300g	600D PE with PU Coating, 420D PE with PU Coating, 150D PE with PU*2 Coating, PVC free, Water- and Stain-resistant	Internal Document Sleeve, 17" Padded Laptop Compartment, Easy-Access Main Compartment, Internal Zippered Mesh Pockets, Top Handle, Adjustable Shoulder Straps, Main Compartment with Organizers, Padded Shoulder Straps, Fully Padded	365 Days Usage, Slim Design, EVA-Molded Back Panels	
	AL5045720	Dark red							
TRAVEL PACK	AL5045810	Black	30l	53,5x34x20cm	1300g	600D PE with PU Coating, 420D PE with PU Coating, 150D PE with PU*2 Coating, PVC free, Water- and Stain-resistant	Detachable Office Organizer, Separate Sneakers Bag, 17" Padded Laptop Compartment, Easy-Access Main Compartment, Chest Strap, Top Handle, Adjustable Shoulder Straps, Main Compartment with Organizers, Padded Shoulder Straps, Fully Padded, Internal Pocket	365 Days Usage, Slim Design, Side Water Bottle Pocket, EVA-Molded Back Panels	
DUFFLE BAG 40L	AL5047820	Black	40l	50x35x22cm	700g	150D PE with PU*2 Coating, 420D PA with TPU Coating, PVC free, Water- and Stain-resistant	Easy-Access Main Compartment, Sneakers Compartment, Internal Zippered Mesh Pockets, Top Handle, Side Handle, Pocket for Shoulder Strap, Backpack Carry Option, Padded Shoulder Straps, Main Compartment	Lightweight, Durable, 365 Days Usage	
DUFFLE BAG 60L	AL5047920	Black	60l	56x40x27cm	880g	150D PE with PU*2 Coating, 420D PA with TPU Coating, PVC free, Water- and Stain-resistant	Easy-Access Main Compartment, Sneakers Compartment, Internal Zippered Mesh Pockets, Top Handle, Side Handle, Pocket for Shoulder Strap, Backpack Carry Option, Padded Shoulder Straps, Main Compartment	Lightweight, Durable, 365 Days Usage	
CABIN TROLLEY	AL5047520	Black / Black	40l	52x33x20cm	2200g	600D PE with PU Coating, 500D PE with PU Coating, 150D PE with PU*2 Coating, PVC free, Water- and Stain-resistant	Internal Document Sleeve, Easy-Access Main Compartment, Retractable Top Handle, Mesh Pocket Inside Lid (Laptop Compatible), Cushioned Handles, Front Accessory Pocket	Durable, 365 Days Usage, Name Card Template, Silent Big Wheels (8.5 cm)	
TROLLEY 90L	AL5047420	Black / Black	90l	74x40x29cm	4000g	600D PE with PU Coating, 500D PE with PU Coating, 150D PE with PU*2 Coating, PVC free, Water- and Stain-resistant	Easy-Access Main Compartment, Retractable Top Handle, Cushioned Handles, Front Accessory Pocket, Internal Pockets	Durable, 365 Days Usage, Name Card Template, Silent Big Wheels (8.5 cm)	
	AL5047410	Red / Rio Red							
RS TRUNK 130L	AL5047310	Red / Rio Red	130l	98x45x35cm	4700g	Tarpaulin Lining, 600D PE with PU Coating, 500D PE with PU Coating, 150D PE with PU*2 Coating, PVC free, Water- and Stain-resistant	Easy-Access Main Compartment, Retractable Top Handle, Cushioned Handles, Front Accessory Pocket, Internal Pockets	Durable, 365 Days Usage, Easy Cleaning Tarpaulin Lining, Name Tag Print, Silent Big Wheels (8.5 cm), 2-Pair-Boot Compartment	

BAGS AND PACKS TECHNICAL SPECIFICATIONS



AL5050520
**BOOT & HELMET
PACK**
BLACK / GREY



AL5050510
**BOOT & HELMET
PACK**
RED / RIO RED



AL5050310
RS PACK 30L
RED / RIO RED



AL5045420
RS PACK 50L
RED / RIO RED



AL5045320
RS PACK 90L
RED / RIO RED



AL5047620
RS DOUBLE SKI WHEELIE
BLACK / BLACK



AL5047610
RS DOUBLE SKI WHEELIE
RED / RIO RED



AL5047110
**RS HEATED BOOT
PACK 120V**
RED / RIO RED



AL5047210
**RS HEATED BOOT
PACK 230V**
RED / RIO RED



AL5046410
**RS GOGGLE CASE
2 PAIRS**
BLACK



AL5049110
RS SKI FIX 10 PCS
BLACK / BLACK



AL5049210
ECO SKI FIX 10 PCS
BLACK / RED



AL5034720
REDSTER FIS SKI BAG
BLACK



AL5050610
RS SKI WHEELIE 4 PAIRS +
RED / RIO RED

PRODUCT	ART. NO.	COLOR	VOL.	DIMENSIONS H x L x W	WEIGHT	FABRIC	CONSTRUCTION	FEATURES	PRICES
BOOT & HELMET PACK	AL5050520	Black / Black	35L	46x35x23,5cm	610g	600D PE with PU Coating, 500D PE with PU Coating, 150D PE with PU*2 Coating, PVC free, Water- and Stain-resistant	Main Compartment for Boots & Helmet, Easy-Access Main Compartment, Padded Shoulder Straps, Ventilation Grid, Padded Back Panel, Internal Pocket	Name Tag Print	
	AL5050510	Red / Rio Red							
RS PACK 30L	AL5050310	Red / Rio Red	30L	50x30x24cm	1100g	Tarpaulin Lining, 600D PE with PU Coating, 500D PE with PU Coating, 150D PE with PU*2 Coating, PVC free, Water- and Stain-resistant	Tangle-free, Easy-Access Main Compartment, Chest Strap, Internal Zippered Mesh Pockets, Integrated Handle, Adjustable Hip Belt, Padded Shoulder Straps, Boot Fixation Cover, Boot Fixation Station, Ventilation Grid, Main Compartment	Durable, Easy Cleaning Tarpaulin Lining, Name Tag Print	
RS PACK 50L	AL5045420	Red / Rio Red	50L	58x34x26cm	1250g	Tarpaulin Lining, 600D PE with PU Coating, 500D PE with PU Coating, 150D PE with PU*2 Coating, PVC free, Water- and Stain-resistant	Main Compartment for Boots & Helmet, Easy-Access Main Compartment, Chest Strap, Handle with Ventilation Grid, Adjustable Hip Belt, Adjustable Shoulder Straps, Padded Shoulder Straps, Fully Padded, Internal Zippered Pocket	Durable, Easy Cleaning Tarpaulin Lining, Name Tag Print	
RS PACK 90L	AL5045320	Red / Rio Red	90L	70x47x38cm	1600g	Tarpaulin Lining, 600D PE with PU Coating, 500D PE with PU Coating, 150D PE with PU*2 Coating, PVC free, Water- and Stain-resistant	Main Compartment for Boots & Helmet, Separate Ski Boot Bag, Easy-Access Main Compartment, Chest Strap, Top Handle, Handle with Ventilation Grid, Adjustable Hip Belt, Adjustable Shoulder Straps, Padded Shoulder Straps, Fully Padded, Internal Zippered Pocket	Durable, Easy Cleaning Tarpaulin Lining, Name Tag Print	
RS HEATED BOOT PACK 120V	AL5047110	Red / Rio Red	70L	60x45x35cm	2300g	Tarpaulin Lining, 600D PE with PU Coating, 500D PE with PU Coating, 150D PE with PU*2 Coating, PVC free, Water- and Stain-resistant	Main Compartment for Boots & Helmet, Easy-Access Main Compartment, Chest Strap, Handle with Ventilation Grid, Adjustable Hip Belt, Padded Shoulder Straps, Removeable Boot Bag, Padded Back Panel, Cushioned Handles, External Pockets, Internal Zippered Pocket	Easy Cleaning Tarpaulin Lining, Integrated Step-On Mat, Name Tag Print, Temperature Setting Hi/Med/Low, DC and Car Cable Plug-In, 12V/DC/45W.110V/AC/108W - ETL-5005384	
	AL5047210	Red / Rio Red							
RS HEATED BOOT PACK 230V	AL5047210	Red / Rio Red	70L	60x45x35cm	2300g	Tarpaulin Lining, 600D PE with PU Coating, 500D PE with PU Coating, 150D PE with PU*2 Coating, PVC free, Water- and Stain-resistant	Main Compartment for Boots & Helmet, Easy-Access Main Compartment, Chest Strap, Handle with Ventilation Grid, Adjustable Hip Belt, Padded Shoulder Straps, Padded Back Panel, Cushioned Handles, External Pockets, Internal Zippered Pocket	Easy Cleaning Tarpaulin Lining, Integrated Step-On Mat, Name Tag Print, Temperature Setting Hi/Med/Low, DC and Car Cable Plug-In, 12V/DC/45W.220V/AC/100W - CE-HA0116091007E	
RS GOGGLE CASE 2 PAIRS	AL5046410	Black	3L	22x19x15cm	400g	600D PE with PU Coating, 150D PE with PU*2 Coating, 600D Poly with PU Coating, PVC free, Water- and Stain-resistant	Top Handle, Fully Padded	Name Tag Print, Integrated Pocket Mirror	
RS SKI FIX 10 PCS	AL5049110	Black / Black	-	43x5,7x1cm	28g				
ECO SKI FIX 10 PCS	AL5049210	Black / Red	-	45,5x4,5x1cm	7g				
RS DOUBLE SKI WHEELIE	AL5047620	Black / Black	-	217x25x17cm	2700g	Tarpaulin Lining, 600D PE with PU Coating, 500D PE with PU Coating, PVC free, Water- and Stain-resistant	Easy-Access Main Compartment, Helmet and Accessory Pocket, Length Adjustment: Daisy Chain, External Compression Straps, Fully Padded, Adjustable Length, Cushioned Handles	Durable, Easy Cleaning Tarpaulin Lining, Name Tag Print, Silent Big Wheels (8.5 cm)	
	AL5047610	Red / Rio Red							
REDSTER FIS SKI BAG 3 PAIRS	AL5034720	Black	-	185x10x40cm 205x10x40cm 230x10x40cm	3200g	Tarpaulin Lining, 600D PE with PU Coating, 2000D PE with TPE Coating, PVC free	External Compression Straps, Fully Padded	Durable, Name Tag Print	
RS SKI WHEELIE 4 PAIRS +	AL5050610	Red / Rio Red	-	50x45x45cm	5000g	Tarpaulin Lining, 600D PE with PU Coating, 500D PE with PU Coating, PVC free, Water- and Stain-resistant	Top Handle, Length Adjustment: Daisy Chain, Side Handles, External Compression Straps, Fully Padded, Cushioned Handles, Ski Length Adjuster, Internal Zippered Pocket	Easy Cleaning Tarpaulin Lining, Name Tag Print, Silent Big Wheels (8.5 cm)	

APPAREL TECHNICAL SPECIFICATIONS

RACE LINE



AP5109510
RS RAIN COAT
RED



AP5113510
RS JACKET
RED



AP5113520
RS JACKET
BLACK



AP5113710
RS KIDS JACKET
RED

ALPS LINE



AP5112630
ALPS FZ HOODIE NEW
BLUE / DARK BLUE



AP5112620
ALPS FZ HOODIE
MAROON



AP5112640
ALPS FZ HOODIE NEW
GREY / BLACK

RACE LINE



AP5120120
RS HOODIE NEW
GREY



AP5120110
RS HOODIE NEW
RED / MAROON



AP5119910
RS SWEAT PANT NEW
GREY



AP5119920
RS SWEAT PANT NEW
MAROON

ALPS LINE



AP5113210
ALPS JACKET
RED / ANTHRACITE



AP5113240
ALPS JACKET NEW
BLUE / DARK BLUE



AP5113230
ALPS JACKET NEW
GREY / BLACK

RACE LINE



AP5120020
RS KIDS HOODIE NEW
GREY



AP5120010
RS KIDS HOODIE NEW
RED / MAROON



AP5112910
RS T-SHIRT
RED



AP5112920
RS T-SHIRT
BLACK

ALPS LINE



AP5113910
ALPS LS T-SHIRT
BLACK



AP5113930
ALPS LS T-SHIRT NEW
LIGHT BLUE

RACE LINE



AP5113610
RS KIDS T-SHIRT
RED



AP5115240
RS WC T-SHIRT NEW
PETROL



AP5115220
RS WC T-SHIRT
BLACK



AP5115230
RS WC T-SHIRT NEW
GREY

ALPS LINE



AP5113840
ALPS T-SHIRT NEW
BLUE



AP5113810
ALPS T-SHIRT
BLACK



AP5113830
ALPS T-SHIRT
RED

APPAREL TECHNICAL SPECIFICATIONS

ATOMIC LINE WOMEN



AP5112830
W ALPS FZ HOODIE NEW
PURPLE



AP5112810
W ALPS FZ HOODIE
WHITE / ANTHRACITE



AP5112820
W ALPS FZ HOODIE
DUSTY ROSE / MAROON

ATOMIC LINE WOMEN



AP5113010
W ALPS T-SHIRT
BLACK



AP5113020
W ALPS T-SHIRT
MAROON



AP5113060
W ALPS T-SHIRT NEW
LAVENDER



AP5113050
W ALPS T-SHIRT NEW
SKY BLUE

ATOMIC LINE



AP5114140
ATOMIC POLO-SHIRT NEW
PETROL



AP5114130
ATOMIC POLO-SHIRT NEW
DARK BLUE



AP5114110
ATOMIC POLO-SHIRT
ANTHRACITE

ATOMIC LINE



AP5107910
ATOMIC SWEATER
ANTHRACITE



AP5107920
ATOMIC SWEATER
MAROON



AP5107610
W ATOMIC SWEATER
ANTHRACITE



AP5107620
W ATOMIC SWEATER
MAROON

RACE LINE



AL5109250
RACING BEANIE NEW
BLUE / GREY / LIGHT BLUE



AL5109230
RACING BEANIE
CARROT / RED / MAROON



AL5108560
ALPS KIDS BEANIE NEW
BLUE / GREY / LIGHT BLUE



AL5108550
ALPS KIDS BEANIE
DUSTY ROSE / WHITE / MAROON

ALPS LINE



AL5115450
ALPS BEANIE NEW
BLUE



AL5115460
ALPS BEANIE NEW
GREY



AL5115410
ALPS BEANIE
BLACK



AL5115420
ALPS BEANIE
RED



AL5108750
ALPS PEAK BEANIE NEW
PURPLE



AL5108730
ALPS PEAK BEANIE
BLACK

ALPS LINE



AL5115350
ALPS HEADBAND NEW
GREY



AL5115370
ALPS HEADBAND NEW
LAVENDER



AL5115340
ALPS HEADBAND NEW
BLUE



AL5115360
ALPS HEADBAND NEW
CORAL FLUO

ALPS LINE



AL5115040
ALPS SLOUCH BEANIE NEW
PETROL



AL5115010
ALPS SLOUCH BEANIE
MAROON



AL5115020
ALPS SLOUCH BEANIE
DUSTY ROSE



AL5035280
ALPS ROLLED CUFF BEANIE NEW
DARK BLUE



AL5035250
ALPS ROLLED CUFF BEANIE
BROWN



AL5035270
ALPS ROLLED CUFF BEANIE
MAROON

ALPS LINE



AL5114810
ALPS TRUCKER CAP
BLACK



AL5114820
ALPS TRUCKER CAP
SAGE



AL5110510
ALPS TECH CAP
GREY



AL5110530
ALPS TECH CAP
SAGE

FIS RULES 2023/24 (EQUIPMENT RULES)

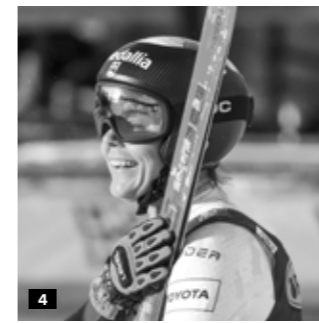
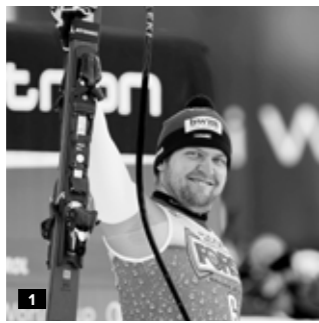
DISCIPLINE	GENDER	SKI LENGTH (MINIMUM) SKI LENGTH MEASUREMENT TOLERANCE OF +/- 1 CM	RADIUS (MINIMUM)	PROFILE WIDTH UNDER BINDING	PROFILE WIDTH IN FRONT OF BINDING	MAXIMUM STAND HEIGHT (SKI/PLATE/BINDING)
WC / EC / COC / FIS MEN AND WOMEN						
DH	MEN	218 cm**	50 m***	<= 65 mm	<= 95 mm	50 mm
DH	WOMEN	210 cm**	50 m***	<= 65 mm	<= 95 mm	50 mm
SG	MEN	210 cm**	45 m	<= 65 mm	<= 95 mm	50 mm
SG	WOMEN	205 cm**	40 m	<= 65 mm	<= 95 mm	50 mm
GS	MEN	193 cm**	30 m	<= 65 mm	<= 103 mm	50 mm
GS	WOMEN	188 cm**	30 m	<= 65 mm	<= 103 mm	50 mm
SL	MEN	165 cm*		>= 63 mm		50 mm
SL	WOMEN	155 cm		>= 63 mm		50 mm
** – 5 cm tolerance for FIS and ENL / * – 10 cm tolerance for men U18 (Junior I) / *** Radius measurement for DH skis with a preparation tolerance of – 1 m						
U 14 (K1) + U 16 (K2)						
SG	U14 MEN / WOMEN			<= 65 mm		50 mm
SG	U16 MEN / WOMEN	>= 183 cm	30 m	<= 65 mm		50 mm
GS	U14 MEN / WOMEN	<= 188 cm	17 m	<= 65 mm		50 mm
GS	U16 MEN / WOMEN	<= 188 cm	17 m	<= 65 mm		50 mm
SL	U14 MEN / WOMEN	>= 130 cm				50 mm
SL	U16 MEN / WOMEN	>= 130 cm				50 mm
>= minimum / <= maximum						
MASTERS						
SG	MEN	185 cm*				50 mm
SG	WOMEN	180 cm*				50 mm
GS skis are allowed!						
GS	MEN	185 cm**				50 mm
GS	WOMEN	180 cm**				50 mm
SL	MEN					50 mm
SL	WOMEN					50 mm
* no tolerance / ** – 5cm tolerance						

For masters athletes the ski length is a recommendation (except SG)! No restrictions regarding length, width and radius for women above 55 and men above 65!
The FIS recommendations and rules for ski length, radius and profile width can be found in the current FIS Specifications for Competition Equipment! (www.fis-ski.com)

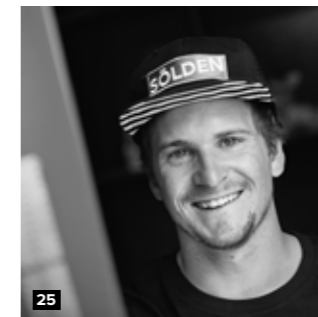
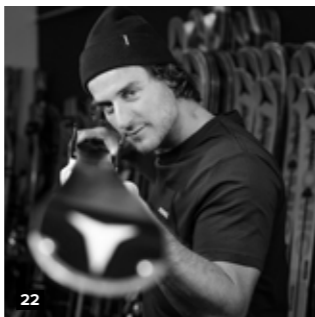
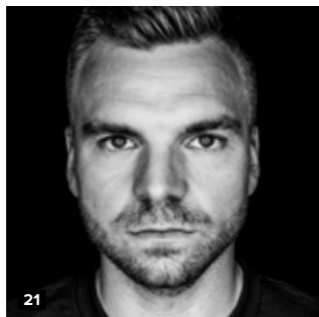
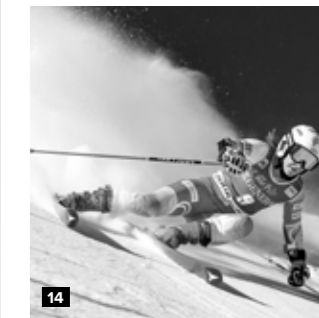
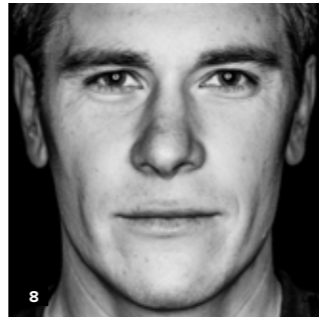
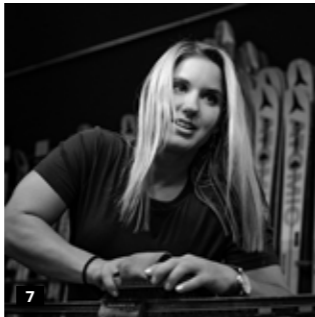
REDSTER FIS USER RECOMMENDATIONS 2023 (SKI, BINDING, BOOT)

Ski selection of FIS products, both length and model, will be always very individual and a subjective decision. We noticed some common trends and following chart should help you to make the right decisions. The optimal skis FIS model and length is determined by the ability, the weight and also the strength of the user.

AGE	WEIGHT (kg)	WEIGHT (lbs)	SLALOM	LENGTH (cm)	BINDING	GIANT SLALOM	LENGTH (cm)	BINDING	BOOT
U8 AGES 6 – 7	18 – 23	40 – 50	REDSTER J9 FIS J-RP ²	116	COLT 7 C	REDSTER J9 FIS J-RP ² REDSTER G9 FIS J-RP ²	116 / 124	COLT 7 C	JR 40
	23 – 27	50 – 60	REDSTER S9 FIS J-RP ²	124	COLT 7 C	REDSTER G9 FIS J-RP ²	124 / 131	COLT 7 C	JR 40 / JR 60 RS
	27 – 32	60 – 70	REDSTER S9 FIS J-RP ²	124	COLT 7 C	REDSTER G9 FIS J-RP ²	124 / 131	COLT 7 C	JR 60 RS
U10 AGES 8 – 9	32 – 36	70 – 80	REDSTER S9 FIS J-RP ²	124 / 131	COLT 7 C	REDSTER G9 FIS J-RP ²	131 / 138	COLT 7 C, COLT 10	JR 40
	36 – 41	80 – 90	REDSTER S9 FIS J-RP ²	131 / 138	COLT 7 C, COLT 10	REDSTER G9 FIS J-RP ²	138 / 145	COLT 10	JR 40 / JR 60 RS
	41 – 45	90 – 100	REDSTER S9 FIS J-RP ²	138 / 145	COLT 10	REDSTER G9 FIS J-RP ²	145 / 152	COLT 10	JR 60 RS
U12 AGES 10 – 11	32 – 36	70 – 80	REDSTER S9 FIS J-RP ²	131	COLT 7 C, COLT 10	REDSTER G9 FIS J-RP ²	131 / 138	COLT 10	JR 60 RS
	36 – 41	80 – 90	REDSTER S9 FIS J-RP ²	131 / 138	COLT 7 C, COLT 10	REDSTER G9 FIS J-RP ²	138 / 145	COLT 10	STI 70
	41 – 45	90 – 100	REDSTER S9 FIS J-RP ²	138 / 145	COLT 10	REDSTER G9 FIS REVOSHOCK J-RP ² REDSTER G9 FIS REVOSHOCK J	145 / 152	COLT 10, X 12 GW	STI 70
	45 – 50	100 – 110	REDSTER S9 FIS J-RP ²	145 / 152	COLT 10, COLT 12	REDSTER G9 FIS REVOSHOCK J-RP ² REDSTER G9 REVOSHOCK J	159 / 166	COLT 10, COLT 12, X 12 GW	STI 90
	50 – 54	110 – 120	REDSTER S9 FIS J	145 / 152	X 12 GW	REDSTER G9 FIS REVOSHOCK J-RP ² REDSTER G9 REVOSHOCK J	159 / 166	COLT 10, COLT 12, X 12 GW	STI 110
U14 AGES 12 – 13	32 – 36	70 – 80	REDSTER S9 FIS J-RP ²	131	COLT 7 C, COLT 10	REDSTER G9 FIS J-RP ²	131 / 138	COLT 10	JR 60 RS
	36 – 41	80 – 90	REDSTER S9 FIS J-RP ²	131 / 138	COLT 7 C, COLT 10	REDSTER G9 FIS J-RP ²	138 / 145	COLT 10	STI 70
	41 – 45	90 – 100	REDSTER S9 FIS J-RP ²	138 / 145	COLT 10	REDSTER G9 FIS REVOSHOCK J-RP ² REDSTER G9 FIS REVOSHOCK J	145 / 152	COLT 10, X 12 GW	STI 70
	45 – 50	100 – 110	REDSTER S9 FIS J-RP ²	145 / 152	COLT 10, COLT 12	REDSTER G9 FIS REVOSHOCK J-RP ² REDSTER G9 REVOSHOCK J	159 / 166	COLT 10, COLT 12, X 12 GW	STI 90
	50 – 54	110 – 120	REDSTER S9 FIS J	145 / 152	X 12 GW	REDSTER G9 FIS REVOSHOCK J-RP ² REDSTER G9 REVOSHOCK J	159 / 166	COLT 10, COLT 12, X 12 GW	STI 110
U16 AGES 14 – 15	54 +	120 +	REDSTER S9 FIS J	152	X 12 GW, X 14 GW	REDSTER G9 FIS J-RP ² REDSTER G9 FIS REVOSHOCK J	166	COLT 12, X 12 GW, X 14 GW	STI 110
	41 – 45	90 – 100	REDSTER S9 FIS J-RP ² REDSTER S9 FIS J	138 / 145	COLT 10, COLT 12, X 12 GW, X 14 GW	REDSTER G9 FIS J-RP ² REDSTER G9 REVOSHOCK J	152 / 159	COLT 10, COLT 12, X 12 GW, X 14 GW	STI 70
	45 – 50	100 – 110	REDSTER S9 FIS J-RP ² REDSTER S9 FIS J	145 / 152	COLT 12, X 12 GW, X 14 GW	REDSTER G9 FIS J-RP ² REDSTER G9 REVOSHOCK J	159/166	COLT 12, X 12 GW, X 14 GW	STI 70 / STI 90
	50 – 54	110 – 120	REDSTER S9 FIS J REDSTER S9 FIS	152 / 155	X 12 GW, X 14 GW, X 12 VAR	REDSTER G9 FIS J-RP ² REDSTER G9 REVOSHOCK J	166	COLT 12, X 12 GW, X 14 GW	STI 110 / TI 110
	54 – 59	120 – 130	REDSTER S9 FIS J REDSTER S9 FIS	152 / 155	X 12 GW, X 14 GW, X 12 VAR	REDSTER G9 FIS REVOSHOCK	173	X 12 VAR	STI 110 / TI 110
FIS WOMEN AGES 16 + UP	59 – 68	130 – 150	REDSTER S9 FIS REDSTER S9 FIS W	155 / 157	X 12 VAR, X 16 VAR	REDSTER G9 FIS REVOSHOCK	173/180	X 12 VAR, X 16 VAR	STI 130 / TI 130
	68 +	150	REDSTER S9 FIS W	157	X 16 VAR	REDSTER G9 FIS REVOSHOCK	180 / 187	X 16 VAR	STI 130 / TI 130
	50 – 54	110 – 120	REDSTER S9 FIS W	157	X 16 VAR	REDSTER G9 FIS REVOSHOCK W	WC/EC 188, FIS 183	X 16 VAR	STI 110
	54 – 59	120 – 130	REDSTER S9 FIS W	157	X 16 VAR	REDSTER G9 FIS REVOSHOCK W	WC/EC 188, FIS 183	X 16 VAR	STI 110
	59 – 64	130 – 140	REDSTER S9 FIS W	157	X 16 VAR	REDSTER G9 FIS REVOSHOCK W	WC/EC 188, FIS 183	X 16 VAR	STI 110 / STI 130
FIS MEN AGES 16 + UP	64 – 69	140 – 150	REDSTER S9 FIS W	157	X 16 VAR, ICON 24	REDSTER G9 FIS REVOSHOCK W	WC/EC 188, FIS 183	X 16 VAR, ICON 24	STI 130
	69 – 73	150 – 160	REDSTER S9 FIS W	157	X 16 VAR, ICON 24	REDSTER G9 FIS REVOSHOCK W	WC/EC 188, FIS 183	X 16 VAR, ICON 24	STI 130 / STI 150
	73 +	160 +	REDSTER S9 FIS W	157	X 16 VAR, ICON 24	REDSTER G9 FIS REVOSHOCK W	WC/EC 188, FIS 183	X 16 VAR, ICON 24	STI 150
	54 – 59	120 – 130	REDSTER S9 FIS M	165	X 16 VAR	REDSTER G9 FIS REVOSHOCK M REDSTER G9 FIS REVOSHOCK W	WC/EC 193, FIS 188	X 16 VAR	TI 110
	59 – 64	130 – 140	REDSTER S9 FIS M	165	X 16 VAR, X 19 MOD	REDSTER G9 FIS REVOSHOCK M REDSTER G9 FIS REVOSHOCK W	WC/EC 193, FIS 188	X 19 VAR, X 19 MOD	TI 110 / TI 130
FIS MEN AGES 16 + UP	64 – 69	140 – 150	REDSTER S9 FIS M	165	X 16 VAR, X 19 MOD, ICON 24	REDSTER G9 FIS REVOSHOCK M REDSTER G9 FIS REVOSHOCK W	WC/EC 193, FIS 188	X 16 VAR, X 19 MOD, ICON 24	TI 130
	69 – 73	150 – 160	REDSTER S9 FIS M	165	X 16 VAR, X 19 MOD, ICON 24	REDSTER G9 FIS REVOSHOCK M REDSTER G9 FIS REVOSHOCK W	WC/EC 193, FIS 188	X 16 VAR, X 19 MOD, ICON 24	TI 150
	73 – 77	160 – 170	REDSTER S9 FIS M	165	X 16 VAR, X 19 MOD, ICON 24	REDSTER G9 FIS REVOSHOCK M REDSTER G9 FIS REVOSHOCK W	WC/EC 193, FIS 188	X 16 VAR, X 19 MOD, ICON 24	TI 150
77 +	170 +	REDSTER S9 FIS M	165	X 16 VAR, X 19 MOD, ICON 24	REDSTER G9 FIS REVOSHOCK M REDSTER G9 FIS REVOSHOCK W	WC/EC 193, FIS 188	X 16 VAR, X 19 MOD, ICON 24	TI 150 / TI 170	



BORN ON THE RACE COURSE



1 Niels Hintermann 2 Alex Vinatzer 3 Mirjam Puchner 4 Breezy Johnson 5 Travis Ganong 6 Nadia Delago
7 Joana Hählen 8 Filip Zubcic 9 Sofia Goggia 10 Mina Fürst Holtmann 11 Lucas Braathen 12 Blaise Giezendanner
13 Aleksander Aamodt Kilde 14 Maryna Gasienica-Daniel 15 Mikaela Shiffrin 16 Katharina Gallhuber 17 Manuel Feller
18 Nicol Delago 19 Erik Read 20 Ali Nullmeyer 21 Andreas Sander 22 Daniel Danklmaier 23 Marco Schwarz
24 Stephanie Brunner 25 Fabio Gstrein 26 Mauro Caviezel

ATOMIC PRO CENTER

ATOMIC PRO CENTER ALTENMARKT

Atomic Strasse 1
5541 Altenmarkt im Pongau
Austria
Tel. +43 6452 3900 177
procenter@atomic.com
www.atomic.com/en/
atomicprocenter

ATOMIC PRO CENTER OSLO

Snofonna 1
1470 Lørenskog
Norway
Tel. +47 919 21 901
procenter.oslo@atomic.com
www.atomic.com/en-no/
atomicprocenter

ATOMIC PRO CENTER PARTNER

A U S T R I A

BRÜNDL SPORTS

Nikolaus-Gassner-Straße 4
5710 Kaprun
Austria
Tel. +43 6547 83880
office@bruendl.at
www.bruendl.at

INSIDER SPORTSHOP TUX

Vorderlanersbach 83
6293 Tux
Austria
Tel. +43 5287 86109
info@insider-sportshop.com
www.insider-sportshop.com

INTERSPORT SCHNEIDER

Wagnergasse 4
5541 Altenmarkt im Pongau
Austria
Tel. +43 6452 5479
info@intersport-schneider.at
www.intersportrent.at

SPORT FACTORY

Widmoosweg 3
5602 Wagrain
Austria
Tel. +43 6413 7365
info@sport-factory.com
www.sport-factory.com

SPORT H & N

Dorf 35a
6235 Reith im Alpbachtal
Austria
Tel. +43 5337 63260
sport-hun@sport-hun.at
www.sport-hun.at

C A N A D A

SOMMET SAINT-SAUVEUR

350 avenue Saint-Denis
Saint-Sauveur (Québec)
Canada
J0R 1R3
infos@sommets.com
Tel. +450-227-4671 or
1-800-363-2426

SQUIRE JOHN'S

209896 Highway 26 West
The Blue Mountains
ON L9Y 0L1
Canada
Tel. +1 705-445-1130
info@squirejohns.com
www.squirejohns.com

G E R M A N Y

INTERSPORT SKI-HIRT

Titiseestraße 28
79822 Titisee-Neustadt
Germany
Tel. +49 7651 92280
egon.hirt@ski-hirt.de
www.ski-hirt.de

INTERSPORT SKIHÜTTE

Tiroler Straße 2
83242 Reit
Germany
Tel. +49 8640 7969290
www.skihuette.net

SPORT SPEISER GMBH

Sport Speiser GmbH
Flurstraße 2
87538 Bolsterlang
Tel. +49 8326 38058
info@sport-speiser.de
www.sport-shop-speiser.de

I T A L Y

ORNELLO SPORT S.N.C

Piazza XX Settembre, 10
46041 Asola MN
Italy
Tel. +39 0376 710234
info@ornellosport.com
www.ornellosport.com

ROSSINI SPORT

Via Comasina, 7
20843 Verano Brianza MB
Italy
Tel. +39 0362 900912
info@rossinisport.it
www.rossinisport.it

SPITALER SPORTS

Via Pillhof, 47
39057 Eppan
BZ
Italy
Tel. +39 0471 205104
www.spitalersports.com

TECHNOSPORT S.R.L.

Frazione Plan Felinaz, 19
11020 Plan Felinaz AO
Italy
Tel. +39 0165 32829
technosport.vda@gmail.com
www.technosport.vda.it

J A P A N

DOING AMS

2-2-6-1 Minami-ku, Terabetōri
Aichi Nagoya, 457-0072
Japan
Tel. +81 52-217-9634
www.ams-doing.com

KANDAHAR MACHIDA SHOP

5-9-15 Haramachida
Machida City
Tokyo 194-0013
Japan
Tel. +81 42-732-7877
www.kandahar.co.jp

ISHI SPORTS KANDA COMPE SHOP

1-6-1 Jinbouchyo
Chiyoda-KU
TOKYO 010-0051
Japan
Tel. +81 3-3295-6060
www.ici-sports.com

ISHI SPORTS MORIOKA SHOP

Moss Bill 2F 2-8-14 Morioka
Morioka City
Iwate 020-0022
Japan
Tel. +81 19-626-2122
www.ici-sports.com

ISHI SPORTS YODOBASHI UTSUNOMIYA SHOP

8F 1-4-6 Ekimae-dori
Utsunomiya City
Tochigi 321-0964
Japan
Tel. +81 28-612-8691
www.ici-sports.com

TANABE SPORTS

5-4 Sumiyoshi Matsuyamachi
Chuo-KU
Osaka City 540-0017
Japan
Tel. +81 6-6763-3901
www.tanabesports.jp

N E T H E R L A N D S

DAKA SSC

Langestraat 111-115
3811 AD Amersfoort
Netherlands
Tel. +31613691044
www.daka.nl/filialen/amersfoort

S L O V E N I A

KOALA

Ulica Antona Tomšiča 11
1294 Višnja Gora
Slovenia
Tel. +386 41 721 888
koala@koala.si
www.koala.si

S P A I N

PATRICK SPORT

C.C. Sexta Avenida
Local A-97/98/99
Avda. de la Victoria 2,
28023 El Plantío
Madrid
Tel. 91 372 84 92
info@patricksport.com

S W E D E N

ALPINGARAGET

Birger Jarlsgatan 127
113 56 Stockholm
Sweden
Tel. +46 8 16 50 10
web@alpingaraget.se
www.alpingaraget.se

S W I T Z E R L A N D

POLLUX SPORT

Rudenz 32
3860 Meiringen
Switzerland
Tel. +41 33 971 43 18
fahner@pollux-sport.ch
www.pollux-sport.ch

SPORT BAUMANN

Weissbadstrasse 4
9050 Appenzell
Switzerland
Tel. +41 71 787 35 45
info@sportbaumann.ch
www.sport-baumann.ch

SPORT SHOP

TIME OUT USTER
Pfäffikerstrasse 30
8610 Uster
Switzerland
Tel. +41 44 942 06 16
mail@sportshop-timeout.ch
www.sportshop-timeout.ch

VAQUIN SPORTS & LOISIRS

Immeuble Mont-Calme
1997 Haute-Nendaz
Switzerland
Tel. +41 27 565 87 54
vaquin.sport@gmail.com
www.atelierduskivaquin.ch

VIRAGE SPORTS

Rte du téléphérique 5
3967 Vercorin
Switzerland
Tel. +41 27 455 87 00
info@virage.ch
www.virage.ch

U K

SKI BARTLETT

Uxbridge Rd
Uxbridge UB10 0NP
United Kingdom
Tel. +44 2088480040
www.skibartlett.com

SOLUTIONS 4 FEET

7 Market Square
Bicester OX26 6AA
United Kingdom
Tel. +44 1869 244424
www.solutions4feet.com

U S A

A RACERS EDGE

114 east Lincoln Avenue
Breckenridge
CO 80424
USA
Tel. +1 970-453-7600
www.aracersedge.com

MOUNT HOOD ALPINE RACING CENTER

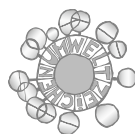
WINTER LOCATION
6520 HWY 35
Mt. Hood, OR 97041
SUMMER LOCATION
88786 E. Government Camp Loop
Government Camp, OR 97028
Tel. +1 541-352-7000
www.mthoodarc.com

PIERCE SKATE AND SKI

208 West 98th Street
Bloomington, MN 55420
Tel. +952-884-1990
www.pierceskateandski.com

RODGERS SKI AND SPORT

5 Railroad Street
Lincoln
NH 03251
USA
Tel. +1 603-745-8347
www.rodgersskiandsport.com



printed according to the
Austrian Ecolabel criteria
for printed matter,
Samson Druck GmbH,
UW-Nr. 837



ATOMIC Austria GmbH, Atomic Straße 1, 5541 Altenmarkt
+43 6452 3900-0, info@atomic.com, atomic.com

© ATOMIC Austria GmbH 2022. Technical information, colors and product designs subject to change.
All rights reserved. Atomic accepts no responsibility for mistakes and printing errors.