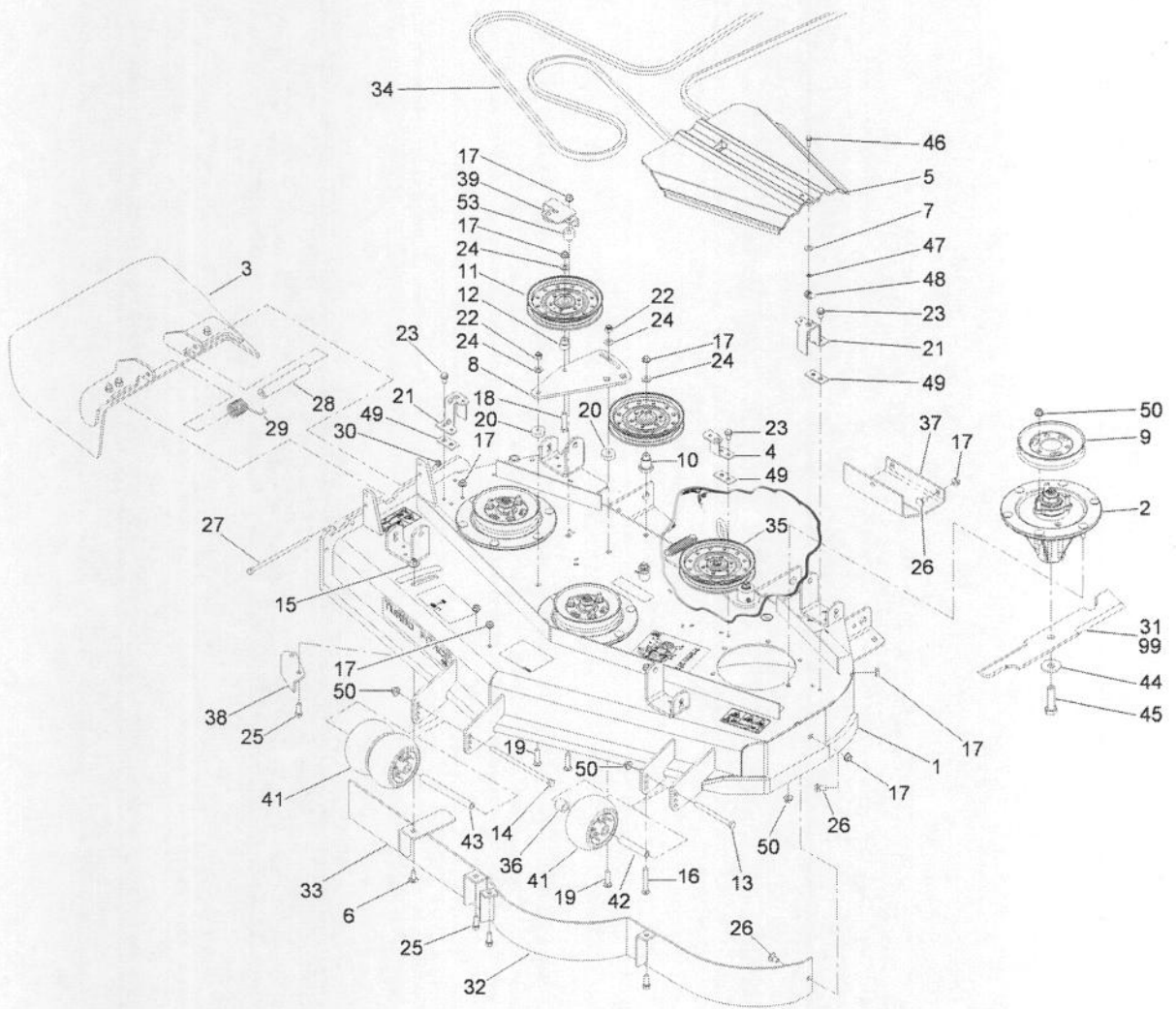


Ref nr	Artikelnummer	Kvt	Beskrivning:
1	108-4062	1	IDLER ARM ASM
1:2	103-4681	2	SLEEVE-BEARING
2	1-603496	1	BUSHING-IDLER
3	1-603044	2	BUSHING
4	108-4056	1	SPRING-EXTENSION
5	3256-24	2	WASHER-FLAT
6	1-633109	1	Idler-Flat
7	3231-6	1	SCREW-CARR
8		1	STOP PAD ASM
8:1	106-3229	1	PAD-BUMPER
8:2	107-1697-01	1	PLATE-STOP
8:3	3269-24	2	RIVET
9	3290-357	5	NUT-HHF, WHIZ
10	302-5	1	FITTING-GREASE
11	3231-31	1	SCREW-CARR
12	108-4072	1	GUIDE-BELT
13	3231-1	1	SCREW-CARR
14	323-12	1	SCREW-HH
15	2844	2	WASHER
16	3256-4	1	WASHER-FLAT
17	108-4063	1	SPACER-RUBBER



Ref nr	Artikelnummer	Kvt	Beskrivning:
1	119-4227	1	DECK ASM
2	117-6158	3	SPINDLE ASM
3	108-7770	1	RUBBER DEFLECTOR ASM
4	108-2177-01	1	BRACKET-COVER, TALL
5	107-8536	2	COVER-BELT
6	3231-27	1	SCREW-CARR
7	73-0041	2	WASHER-THRUST
8	119-4223-01	1	PLATE - IDLER
9	107-1684	3	PULLEY
10	106-3214	1	MOUNT-PULLEY
11	1-633109	2	Idler-Flat
12	1-603496	1	BUSHING-IDLER
13	323-23	1	SCREW-HH
14	108-5388	1	SCREW-HH
15	109-6658	1	NUT-FLANGE, NI
16	3231-31	1	SCREW-CARR
17	3290-357	15	NUT-HHF, WHIZ
18	323-9	1	SCREW-HH
19	3231-4	3	SCREW-CARR
20	105-7788	2	Spacer
21	108-4121-01	2	BRACKET-COVER
22	3296-39	2	NUT-LOCK, NI
23	32144-70	3	SCREW-HWHTF
24	3256-24	4	WASHER-FLAT
25	92-1624	5	SCREW-HWH
26	3231-1	7	SCREW-CARR
27	322-50	1	SCREW-HH
28	105-4622	1	SPACER
29	108-4052	1	SPRING-TORSION
30	3296-47	1	NUT-LOCK, NI
31	107-3192-03	3	BLADE-16.5 INCH (HIGH FLOW)
32	107-8510-01	1	BAFFLE ASM
33	115-7455-01	1	BAFFLE ASM
34	114-8154	1	BELT-V
35		1	SPRING IDLER ASM
36	98-7913	1	TUBE-SPACER
37	107-3166-01	1	SKID
38	107-8541-01	1	BAFFLE-DISCHARGE
39	119-4226-01	1	BRACKET - COVER
41	1-603299	3	ROLLER-SCALP, ANTI
42	98-7912	1	TUBE-SPANNER
43	98-5967	1	SPACER-WHEEL
44	103-0865	3	Washer-Blade Bolt, Heavy
45	51-4060	3	SCREW-BLADE
46	32105-15	2	SCREW-HWH
47	106-8737	2	NUT-RETAINER
48	107069	2	CLIP
49	112-8663-01	3	SPACER-COVER, BELT
50	104-8301	29	NUT-FLANGE, NI
53	92-5791	1	SPACER
99	107-3194-03	3	BLADE-ROTARY, 16.5 INCH (MED FLOW)
99	107-3195-03	3	BLADE-ROTARY, 16.5 INCH (ATOMIC)
99	107-3196-03	3	BLADE-RECYCLER, 16.5 INCH
99	107-3193-03	3	BLADE-ROTARY, 16.5 INCH (LOW FLOW)